

Note: This product has been discontinued and replaced with the CPS.



Project: _____
 Location: _____
 Cat. #: _____
 Type: _____
 Quantity: _____

LED

CPL | LED Canopy Light

Features:

- High performance LED technology
- Bright, uniform illumination providing added security lighting
- Lightweight and easy to install
- Compact, low-profile design
- 0-10V dimming standard, down to 10%

Applications:

- Suitable for most canopy applications
- Gas stations
 - Pathways
 - Perimeter lighting
 - Storage areas
 - Underpasses

Mounting:

- Surface mount with J-Box
- Pendant with 3/4" conduit

Ambient Operating Temp:

- -40°C to 40°C

Construction:

- One piece sealed die cast aluminum housing
- UV stabilized frosted polycarbonate optical lens
- Available in white or black finish

Certifications:

- ETL Listed for wet locations
- IP65
- RoHS compliant



Predicted Lifetime:

- 50,000 hrs

Warranty:

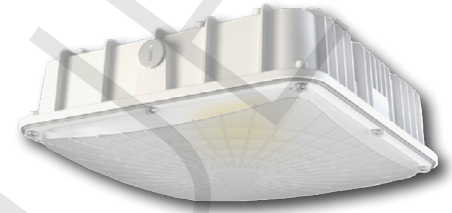
- 5 year limited system warranty - see www.LumenFocus.com for complete warranty terms and conditions



Ordering Guide:

example: CPL MD UV FP 850 BK

Series	Output	Voltage	Shielding	CRI/CCT	Finish
CPL		UV	FP		
CPL	HI High	UV 120-277	FP Frosted Polycarbonate	840 80 CRI/4000K ⁽¹⁾	BK Black Finish
	LW Low	UV 120-277	FP Frosted Polycarbonate	850 80 CRI/5000K	BK Black Finish
	MD Medium				WH White Finish
	HI High				
	VH Very High				



Notes

⁽¹⁾ 4000K models only available in HI output and in black finish only

Accessories: (order separately)

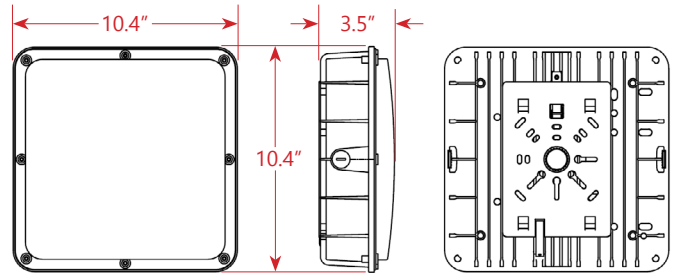
MSD 360° Bi-level and daylight harvesting microwave sensor



Performance Chart:

Catalog #	Lumens	Wattage	LPW	BUG Rating
CPL LW UV FP 850	2890	21	138	B1-U2-G1
CPL MD UV FP 850	4800	40	120	B2-U2-G1
CPL HI UV FP 840	6720	60	112	B2-U3-G1
CPL HI UV FP 850	6900	60	115	B2-U3-G1
CPL VH UV FP 850	8625	75	115	B2-U3-G2

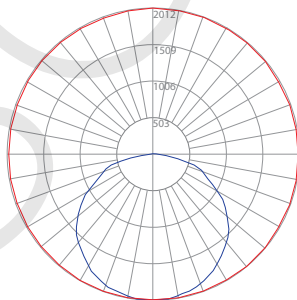
Schematic:



Photometric Data:

CPL HI UV FP 850

Test No.: s17120061d-01
 Luminaire Lumens: 6,615 lm
 Luminaire Watts: 57.43W
 Efficacy: 115.2 LPW



— Vert. Plane
 — Horiz. Cone

