

Project: _____
 Location: _____
 Cat. #: _____
 Type: _____
 Quantity: _____

T-LED
TYPE-B

EWB S | Type B T-LED Slim Wrap

Features:

- Type B-Line Voltage T8 LED tube ready
- Can be surface, stem, or cable mounted as individual units or in continuous rows
- Buy American Act compliant *(All base luminaires are BAA compliant without lamps. Addition of options may change eligibility. Contact factory for details.)*

Applications:

Suitable for most commercial, industrial and institutional applications

- Warehouse
- Manufacturing Facility
- Stock Room
- Classroom

Ambient Operating Temp.:

- -20°C to 45°C per lamp specifications
- Consult manufacturer's spec sheet for specific lamp operating temperatures*

Construction:

- Die-formed heavy-gauge cold rolled steel
- Pre-painted with a highly durable, highly reflective white finish
- Frosted Acrylic Lens

Certifications:

- UL 1598 listed for US and Canada, suitable for damp locations



Warranty:

- 5 year limited system warranty - see www.LumenFocus.com for complete warranty terms and conditions.
- Lamps: 5 year standard warranty. 10 year extended limited warranty based on depreciated value after 5 yrs, max 4,380 hrs/yr - see Keystone Tech's website for complete warranty terms and conditions.



10 YEAR
EXTENDED
WARRANTY



Ordering Guide:

example: EWB S 4 2 T8LED UV SENS QC 15T84GCSD 840

Series	Length	# Lamps ⁽¹⁾	Lamp Type	Voltage	Wiring	Shielding	Hanging	Options	Lamps	CRI/CCT ⁽⁴⁾		
EWB S			T8LED	UV		FA						
EWB S Type B T-LED Slim Wrap	2 2'	1 1 Lamp	T8LED T8 LED Type B-Line Voltage Lamp	UV 120-277	SENS Single End, Non-Shunted Sockets	FA Frosted Acrylic	Blank None	Blank No Options	NL Lamps Not Included	Blank Lamps Not Included		
	3 3'	2 2 Lamps									2' Lamp Options: 7T82GCSD 2'; 7W T8, Coated Glass, Single/Double End Wiring	827 80+ CRI / 2700K
	4 4'										3' Lamp Options: 12T83GCSD 3'; 12W T8, Coated Glass, Single/Double End Wiring	830 80+ CRI / 3000K
	3T 3' Tandem, 6' Total										15T84GCSD 4'; 15W T8, Coated Glass, Single/Double End Wiring	835 80+ CRI / 3500K
	4T 4' Tandem, 8' Total										4' Lamp Options: 10.5T84GSD 4'; 10.5W T8, Glass, Single/ Double End Wiring	840 80+ CRI / 4000K
					DENS Double End, Non-Shunted Sockets		QC 10' Quick Hang Cable Kit	EM5 5W Emergency Driver KT-EMRG-LED-5-500- AC ⁽²⁾		850 80+ CRI / 5000K		
					DES Double End, Shunted Sockets		QC15 15' Quick Hang Cable Kit	EM12 12W Emergency Driver KT-EMRG-LED-12-1200- AC ⁽²⁾		865 80+ CRI / 6500K		
							QC20 20' Quick Hang Cable Kit	BAA Buy American Act Compliant ⁽³⁾				
									14.5T84GSD 4'; 14.5W T8, Glass, Single/ Double End Wiring			
									15T84GCSD 4'; 15W T8, Coated Glass, Single/Double End Wiring			
									18.5T84GCSD 4'; 18.5W T8, Coated Glass, Single/Double End Wiring			
									25T84GSD 4'; 25W T8, Glass, Single/Double End Wiring			

Notes

- ⁽¹⁾ # of lamps is for the profile of the fixture (ex. EWB S 4T 2 T8LED has 2 lamps per 4' section, 4 lamps total)
- ⁽²⁾ 0°C-55°C operating temp. Single end wiring only. Check lamp manufacturer for compatibility.
- ⁽³⁾ Certain options, including lamps, may not be eligible for BAA compliance. Contact factory for details.
- ⁽⁴⁾ Not all color temperatures are available for all lamp types. See lamp chart on page 3 for details.

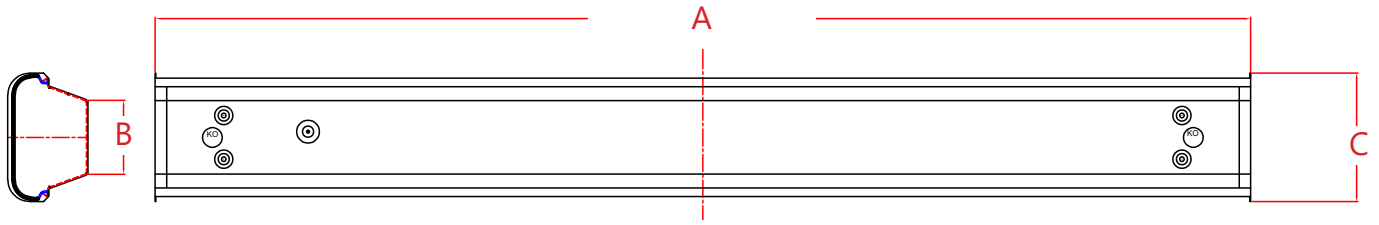
Lamp Chart:

Lamp Code	Lamp Model	Nominal Length	Watts	Lumens 827	Lumens 830	Lumens 835	Lumens 840	Lumens 850	Lumens 865	Construction	Wiring	Rated Life	Warranty
7T82GCSD	KT-LED7T8-24GC-8xx-DX2 /G2	24"	7	N/A	N/A	950	1,000	1,000	N/A	Coated Glass	Single or Double End	50,000 hours	10 Years*
12T83GCSD	KT-LED12T8-36GC-8xx-DX2 /G2	36"	12	N/A	N/A	1,600	1,650	1,650	N/A	Coated Glass	Single or Double End	50,000 hours	10 Years*
10.5T84GSD	KT-LED10.5T8-48G-8xx-DX2 /G2	48"	10.5	1,650	1,650	1,650	1,700	1,720	N/A	Glass	Single or Double End	50,000 hours	10 Years*
14.5T84GSD	KT-LED14.5T8-48G-8xx-DX2 /G2	48"	14.5	N/A	1,900	1,900	2,000	2,000	2,000	Glass	Single or Double End	50,000 hours	10 Years*
15T84GCSD	KT-LED15T8-48GC-8xx-DX2 /G2	48"	15	N/A	1,900	1,900	2,000	2,000	2,000	Coated Glass	Single or Double End	50,000 hours	10 Years*
18.5T84GCSD	KT-LED18.5T8-48GC-8xx-DX2 /G2	48"	18.5	N/A	N/A	2,450	2,500	2,600	2,600	Coated Glass	Single or Double End	50,000 hours	10 Years*
25T84GSD	KT-LED25T8-48G-8xx-DX2	48"	25	N/A	3,000	3,000	2,900	3,000	N/A	Glass	Single or Double End	50,000 hours	10 Years*

* 5 yr standard warranty. 10 yr extended limited warranty up to 4,380 operating hours per year, based on depreciated value after 5 yrs. See Keystone Tech.'s website for complete warranty terms and conditions.



Schematic:



Fixture Length	A	B	C
EWB S 2'	24"	3.234"	5.6"
EWB S 3'	36"	3.234"	5.6"
EWB S 4'	48"	3.234"	5.6"
EWB S 3T	72"	3.234"	5.6"
EWB S 4T	96"	3.234"	5.6"

