

Project: \_\_\_\_\_  
 Location: \_\_\_\_\_  
 Cat. #: \_\_\_\_\_  
 Type: \_\_\_\_\_  
 Quantity: \_\_\_\_\_



# RCL G2 6 Power Select | LED Channel Retrofit Kit

## Features:

- High performance LED technology
- Field selectable output
- 90+ CRI Standard
- 0-10V dimming drivers standard
- Field replaceable LED boards and drivers
- Frosted diffuser available to help minimize glare and improve aesthetics
- A wide variety of lumen packages and lengths allows for flexibility in design and helps maximize energy savings
- Saves on installation cost, material cost, and waste
- Buy American Act compliant *(All base luminaires are BAA compliant. Addition of options may change eligibility. Contact factory for details.)*

## Applications:

- Suitable for most commercial, industrial and institutional applications
- Office
  - Retail
  - Warehouse
  - Coves
  - Valences

## Ambient Operating Temp.:

- -30°C to 40°C

## Construction:

- Precision brake formed from heavy gauge cold rolled steel
- Highly durable, highly reflective white finish

## Certifications:

- UL 1598 listed for US and Canada, suitable for damp locations

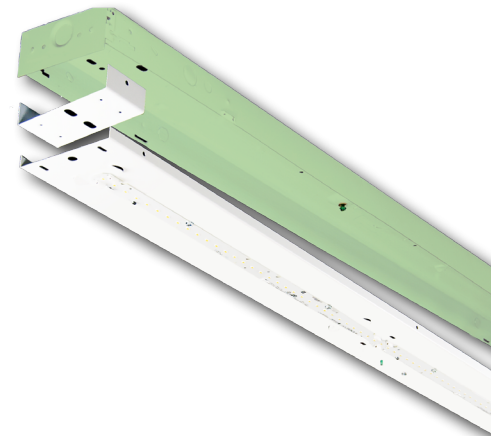


## Predicted Lifetime:

- L70: ≥ 129,000 hrs (calculated)
- L80: ≥ 81,000 hrs (calculated)
- L90: ≥ 39,000 hrs (reported)
- 85% lumen maintenance @ 60,000 hrs *(based on LM80 and insitu laboratory testing)*
- Driver: 85,000 hrs at 120V input, 100% load and 60°C/140°F case temperature

## Warranty:

- 5 year limited system warranty - see [www.LumenFocus.com](http://www.LumenFocus.com) for complete warranty terms and conditions



Ordering Guide:

example: RCL G2 6 SEL75 UV FR 940 4.25" ZOSMD EM10

Series	Version	Length	Output	Voltage	Shielding	CRI/CCT	Channel Width	Controls	Options
RCL	G2	6		UV					
RCL	G2 Gen 2	6 6'	<b>SEL15</b> 15W Selectable Output	UV 120-277	Blank No Lenses  FR Frosted Acrylic Diffusers	<b>930</b> 90 CRI/3000K	x.xx" Specify Channel Width (in inches)  VAR Variable - Adjusts to fit channel widths from 4.00" to 5.00"	Blank No Controls  ZOSMD Microwave Occupancy Sensor with Photocell (On/Off/Dim) <sup>(1)</sup>	Blank No Options  EM6 6.5W Emergency Pack <sup>(2)</sup>  EM10 10W Emergency Pack <sup>(2)</sup>  EM14 14W Emergency Pack <sup>(2)</sup>  CC Conformal Coating  LVL 0-10V Dimming Leads for Easy Field Access  BAA Buy American Act Compliant
			<b>SEL25</b> 25W Selectable Output			<b>935</b> 90 CRI/3500K			
			<b>SEL35</b> 35W Selectable Output			<b>940</b> 90 CRI/4000K			
			<b>SEL45</b> 45W Selectable Output			<b>950</b> 90 CRI/5000K			
			<b>SEL75</b> 75W Selectable Output						
			<b>SEL100</b> 100W Selectable Output						

Notes

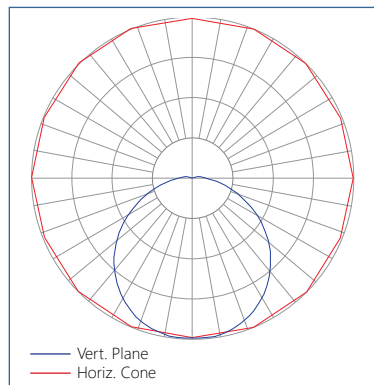
- <sup>(1)</sup> 120-277V only. See page 4 for more details.
- <sup>(2)</sup> 120-277V / 0°C-55°C ambient. To estimate lumen output in emergency mode, multiply EM wattage by the Lumens per Watt of the lowest output setting of the luminaire it is installed in.  
ex. RCL G2 6 SEL75 UV FR 940 EM10 → 156.3 LPW x 10W = 1,563 lm

Accessories (order separately)

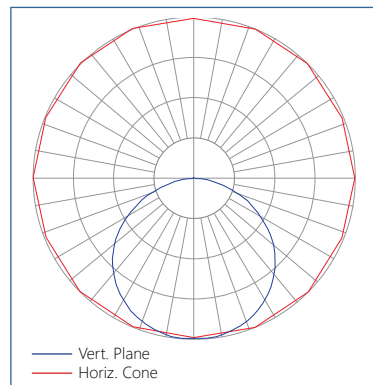
STD(480V) 480V to 277V Step Down Transformer

Photometric Data:

Relative Luminous Intensity with FR lens



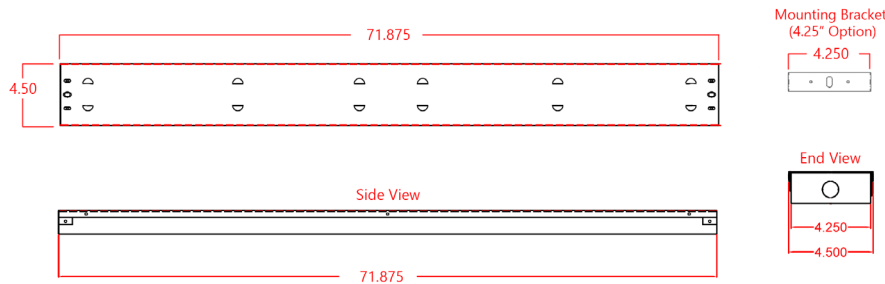
Relative Luminous Intensity without FR lens



Performance Chart:

Catalog #	Watts	Lumens 930	LPW 930	Lumens 935	LPW 935	Lumens 940/950	LPW 940/950	Frosted Lens (FR)							
								Watts	Lumens 930	LPW 930	Lumens 935	LPW 935	Lumens 940/950	LPW 940/950	
RCL G2 6 SEL15	No Lens							Frosted Lens (FR)							
	8.9	1385.5	155.7	1391.3	156.4	1424.4	160.1	8.9	1318.1	148.2	1323.7	148.8	1355.1	152.3	
	10.2	1596.1	155.7	1602.8	156.4	1640.8	160.1	10.2	1518.4	148.2	1524.8	148.8	1561.1	152.3	
	12.1	1877.3	155.7	1885.2	156.3	1930.0	160.0	12.1	1786.0	148.1	1793.6	148.7	1836.2	152.2	
RCL G2 6 SEL25	13.4	2088.5	155.5	2097.3	156.2	2147.1	159.9	13.4	1986.9	148.0	1995.3	148.6	2042.7	152.1	
	13.0	2088.5	161.1	2097.3	161.8	2147.1	165.6	13.0	1986.9	153.2	1995.3	153.9	2042.7	157.5	
	15.2	2440.3	160.7	2450.6	161.4	2508.8	165.2	15.2	2321.6	152.9	2331.4	153.6	2386.8	157.2	
	17.4	2791.5	160.3	2803.2	160.9	2869.8	164.8	17.4	2655.7	152.5	2666.9	153.1	2730.3	156.8	
RCL G2 6 SEL35	19.7	3141.3	159.7	3154.6	160.4	3229.5	164.2	19.7	2988.6	151.9	3001.2	152.6	3072.4	156.2	
	21.2	3489.2	164.5	3503.9	165.2	3587.1	169.1	21.2	3319.5	156.5	3333.5	157.1	3412.7	160.9	
	23.4	3834.4	163.6	3850.6	164.3	3942.0	168.2	23.4	3648.0	155.7	3663.4	156.3	3750.4	160.1	
	25.7	4176.4	162.7	4194.0	163.4	4293.6	167.3	25.7	3973.3	154.8	3990.0	155.5	4084.8	159.1	
RCL G2 6 SEL45	27.9	4514.3	161.7	4533.4	162.4	4641.0	166.2	27.9	4294.8	153.8	4312.9	154.5	4415.4	158.1	
	34.2	5583.1	163.3	5606.6	164.0	5739.8	167.9	34.2	5311.6	155.3	5334.0	156.0	5460.7	159.7	
	36.7	5980.4	162.8	6005.7	163.5	6148.3	167.3	36.7	5689.7	154.9	5713.6	155.5	5849.3	159.2	
	39.3	6375.8	162.2	6402.7	162.9	6554.8	166.8	39.3	6065.8	154.3	6091.4	155.0	6236.1	158.7	
RCL G2 6 SEL75	41.9	6768.9	161.6	6797.4	162.3	6958.9	166.2	41.9	6439.7	153.8	6466.9	154.4	6620.5	158.1	
	54.3	8687.2	159.8	8723.8	160.5	8931.0	164.3	54.3	8264.8	152.1	8299.6	152.7	8496.8	156.3	
	59.6	9426.3	158.1	9466.0	158.8	9690.9	162.6	59.6	8968.0	150.4	9005.8	151.1	9219.7	154.7	
	64.9	10145.2	156.2	10187.9	156.9	10429.9	160.6	64.9	9651.9	148.6	9692.6	149.3	9922.8	152.8	
RCL G2 6 SEL100	70.3	10841.1	154.2	10886.8	154.8	11145.4	158.5	70.3	10313.9	146.7	10357.4	147.3	10603.4	150.8	
	74.3	11832.5	159.2	11882.4	159.9	12164.6	163.7	74.3	11257.2	151.5	11304.6	152.1	11573.1	155.7	
	79.6	12569.1	157.9	12622.1	158.6	12921.9	162.3	79.6	11958.0	150.2	12008.4	150.8	12293.6	154.4	
	84.9	13290.6	156.5	13346.6	157.1	13663.6	160.9	84.9	12644.3	148.9	12697.6	149.5	12999.2	153.1	
	90.3	13995.3	155.0	14054.3	155.6	14388.1	159.3	90.3	13314.8	147.5	13370.9	148.1	13688.5	151.6	

Schematic:



## Controls Summary:

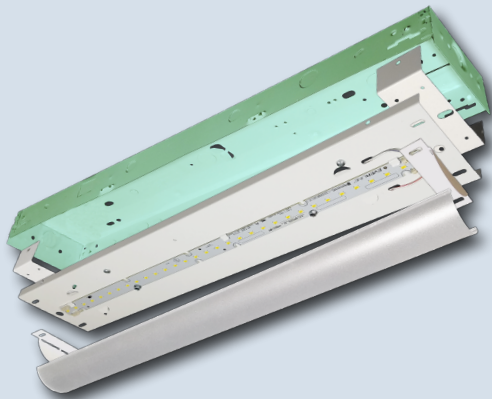
Control Code	Type	Capabilities	Communication
ZOSMD	Motion (Microwave), Photosensor	On/Low/Off	Wired 1-10V

LLLC = Luminaire Level Lighting Control

\* Additional equipment required. Contact LumenFocus representative for details

### Microwave Occupancy Sensor (ZOSMD)

The Leviton OSM3D-DDW (or equivalent) detects motion through low density materials using high frequency electromagnetic waves. This means it can sit discretely behind the RCL G2's frosted lens. The ZOSMD features automatic switching based on motion and ambient light level. ZOSMD option adds step-dimming functionality - standby dimming level 10% / 20% / 30% / 50%. **Max mounting height for ZOSMD 40 feet.**



## LUMENFOCUS Re-boardABILITY

The RCL G2 features field replaceable boards and drivers. This allows you to upgrade to more efficient technology in the future. Or, in the rare event of a failure, you can rapidly replace defective components. Re-boardABILITY helps to ensure you won't get stuck with an obsolete light fixture. [Learn more about Re-boardABILITY here.](#)

