

Project: \_\_\_\_\_  
 Location: \_\_\_\_\_  
 Cat. #: \_\_\_\_\_  
 Type: \_\_\_\_\_  
 Quantity: \_\_\_\_\_



# RCL G2 4 Power Select | LED Channel Retrofit Kit

## Features:

- High performance LED technology
- Field selectable output
- 90+ CRI Standard
- 0-10V dimming drivers standard
- Field replaceable LED boards and drivers
- Frosted diffuser available to help minimize glare and improve aesthetics
- A wide variety of lumen packages and lengths allows for flexibility in design and helps maximize energy savings
- Saves on installation cost, material cost, and waste
- Buy American Act compliant *(All base luminaires are BAA compliant. Addition of options may change eligibility. Contact factory for details.)*

## Applications:

- Suitable for most commercial, industrial and institutional applications
- Office
  - Retail
  - Warehouse
  - Coves
  - Valences

## Ambient Operating Temp.:

- -30°C to 40°C

## Construction:

- Precision brake formed from heavy gauge cold rolled steel
- Highly durable, highly reflective white finish

## Certifications:

- UL 1598 listed for US and Canada, suitable for damp locations

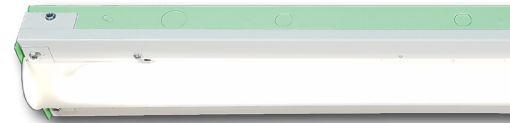


## Predicted Lifetime:

- L70: ≥ 129,000 hrs (calculated)
- L80: ≥ 81,000 hrs (calculated)
- L90: ≥ 39,000 hrs (reported)
- 85% lumen maintenance @ 60,000 hrs *(based on LM80 and insitu laboratory testing)*
- Driver: 85,000 hrs at 120V input, 100% load and 60°C/140°F case temperature

## Warranty:

- 5 year limited system warranty - see [www.LumenFocus.com](http://www.LumenFocus.com) for complete warranty terms and conditions



Ordering Guide:

example: RCL G2 4 SEL35 UV FR 940 4.25" ZOSMD EM10

Series	Version	Length	Output	Voltage	Shielding	CRI/CCT	Channel Width	Controls	Options
RCL	G2	4		UV					
<b>RCL</b>	<b>G2</b> Gen 2	<b>4</b> 4'	<b>SEL15</b> 15W Selectable Output  <b>SEL25</b> 25W Selectable Output  <b>SEL35</b> 35W Selectable Output  <b>SEL45</b> 45W Selectable Output  <b>SEL75</b> 75W Selectable Output	<b>UV</b> 120-277	<b>Blank</b> No Lenses  <b>FR</b> Frosted Acrylic Diffusers	<b>930</b> 90 CRI/3000K  <b>935</b> 90 CRI/3500K  <b>940</b> 90 CRI/4000K  <b>950</b> 90 CRI/5000K	<b>x.xx"</b> Specify Channel Width (in inches)  <b>VAR</b> Variable - Adjusts to fit channel widths from 4.00" to 5.00"	<b>Blank</b> No Controls  <b>ZOSMD</b> Microwave Occupancy Sensor with Photocell (On/Off/Dim) <sup>(1)</sup>	<b>Blank</b> No Options  <b>EM6</b> 6.5W Emergency Pack <sup>(2)</sup>  <b>EM10</b> 10W Emergency Pack <sup>(2)</sup>  <b>EM14</b> 14W Emergency Pack <sup>(2)</sup>  <b>CC</b> Conformal Coating  <b>LVL</b> 0-10V Dimming Leads for Easy Field Access  <b>BAA</b> Buy American Act Compliant

Notes

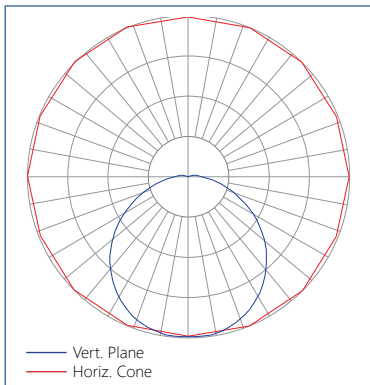
- <sup>(1)</sup> 120-277V only. See page 4 for more details.
- <sup>(2)</sup> 120-277V / 0°C-55°C ambient. To estimate lumen output in emergency mode, multiply EM wattage by the Lumens per Watt of the lowest output setting of the luminaire it is installed in.  
ex. RCL G2 4 SEL15 UV 940 EM10 → 159.9 LPW x 10W = 1,599 lm

Accessories (order separately)

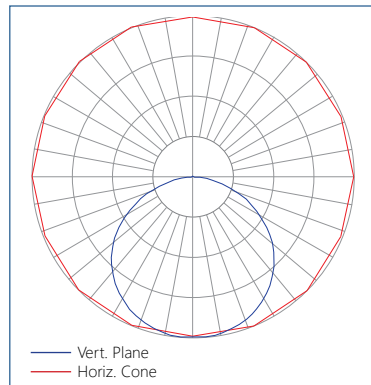
**STD(480V)** 480V to 277V Step Down Transformer

Photometric Data:

Relative Luminous Intensity with FR lens



Relative Luminous Intensity without FR lens



## Performance Chart:

Catalog #	Watts	Lumens (930)	LPW (930)	Lumens (935)	LPW (935)	Lumens (940)	LPW (940)	Lumens (950)	LPW (950)
RCL G2 4 SEL15 UV 9xx	9.0	1392.3	155.5	1398.2	156.2	1431.4	159.9	1431.4	159.9
	10.3	1603.4	155.2	1610.2	155.9	1648.4	159.6	1648.4	159.6
	12.2	1884.3	154.7	1892.3	155.3	1937.2	159.0	1937.2	159.0
	13.6	2094.2	154.2	2103.0	154.8	2153.0	158.5	2153.0	158.5
RCL G2 4 SEL25 UV 9xx	14.8	2385.5	161.5	2395.5	162.2	2452.4	166.0	2452.4	166.0
	17.3	2787.7	161.0	2799.4	161.7	2865.9	165.5	2865.9	165.5
	19.9	3189.1	160.5	3202.6	161.2	3278.6	165.0	3278.6	165.0
	22.5	3589.2	159.8	3604.3	160.5	3689.9	164.3	3689.9	164.3
RCL G2 4 SEL35 UV 9xx	24.2	3987.0	164.6	4003.8	165.3	4098.9	169.2	4098.9	169.2
	26.8	4381.8	163.8	4400.2	164.4	4504.8	168.4	4504.8	168.4
	29.3	4772.8	162.8	4793.0	163.5	4906.8	167.4	4906.8	167.4
	31.9	5159.4	161.8	5181.1	162.5	5304.2	166.3	5304.2	166.3
RCL G2 4 SEL45 UV 9xx	34.9	5540.6	158.9	5564.0	159.5	5696.1	163.3	5696.1	163.3
	37.5	5915.8	157.7	5940.8	158.3	6081.9	162.1	6081.9	162.1
	40.2	6284.2	156.4	6310.7	157.0	6460.6	160.8	6460.6	160.8
	42.9	6645.0	155.0	6673.0	155.6	6831.5	159.3	6831.5	159.3
RCL G2 4 SEL75 UV 9xx	54.8	8621.2	157.2	8657.6	157.9	8863.2	161.6	8863.2	161.6
	60.2	9330.2	155.0	9369.5	155.6	9592.1	159.3	9592.1	159.3
	65.6	10011.9	152.6	10054.1	153.2	10292.9	156.9	10292.9	156.9
	71.1	10662.7	150.0	10707.7	150.6	10962.0	154.2	10962.0	154.2
RCL G2 4 SEL15 UV FR 9xx	9.0	1324.6	148.0	1330.2	148.6	1361.8	152.1	1361.8	152.1
	10.3	1525.4	147.7	1531.9	148.3	1568.3	151.8	1568.3	151.8
	12.2	1792.7	147.2	1800.3	147.8	1843.0	151.3	1843.0	151.3
	13.6	1992.4	146.7	2000.8	147.3	2048.3	150.8	2048.3	150.8
RCL G2 4 SEL25 UV FR 9xx	14.8	2269.5	153.6	2279.1	154.3	2333.2	157.9	2333.2	157.9
	17.3	2652.1	153.2	2663.3	153.8	2726.5	157.5	2726.5	157.5
	19.9	3034.1	152.7	3046.9	153.3	3119.2	157.0	3119.2	157.0
	22.5	3414.6	152.1	3429.0	152.7	3510.5	156.3	3510.5	156.3
RCL G2 4 SEL35 UV FR 9xx	24.2	3793.1	156.6	3809.1	157.3	3899.6	161.0	3899.6	161.0
	26.8	4168.7	155.8	4186.3	156.5	4285.7	160.2	4285.7	160.2
	29.3	4540.8	154.9	4559.9	155.6	4668.2	159.2	4668.2	159.2
	31.9	4908.5	153.9	4929.2	154.6	5046.3	158.2	5046.3	158.2
RCL G2 4 SEL45 UV FR 9xx	34.9	5271.2	151.1	5293.4	151.8	5419.2	155.4	5419.2	155.4
	37.5	5628.2	150.0	5651.9	150.6	5786.1	154.2	5786.1	154.2
	40.2	5978.6	148.8	6003.8	149.4	6146.4	152.9	6146.4	152.9
	42.9	6321.9	147.4	6348.5	148.1	6499.3	151.6	6499.3	151.6
RCL G2 4 SEL75 UV FR 9xx	54.8	8202.0	149.6	8236.6	150.2	8432.2	153.8	8432.2	153.8
	60.2	8876.5	147.5	8914.0	148.1	9125.7	151.6	9125.7	151.6
	65.6	9525.0	145.2	9565.2	145.8	9792.4	149.2	9792.4	149.2
	71.1	10144.3	142.7	10187.0	143.3	10429.0	146.7	10429.0	146.7



Controls Summary:

Control Code	Type	Capabilities	Communication
ZOSMD	Motion (Microwave), Photosensor	On/Low/Off	Wired 1-10V

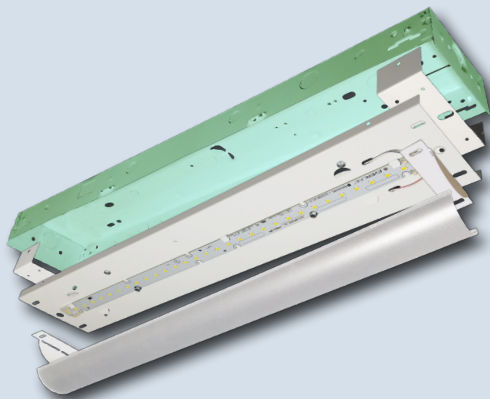
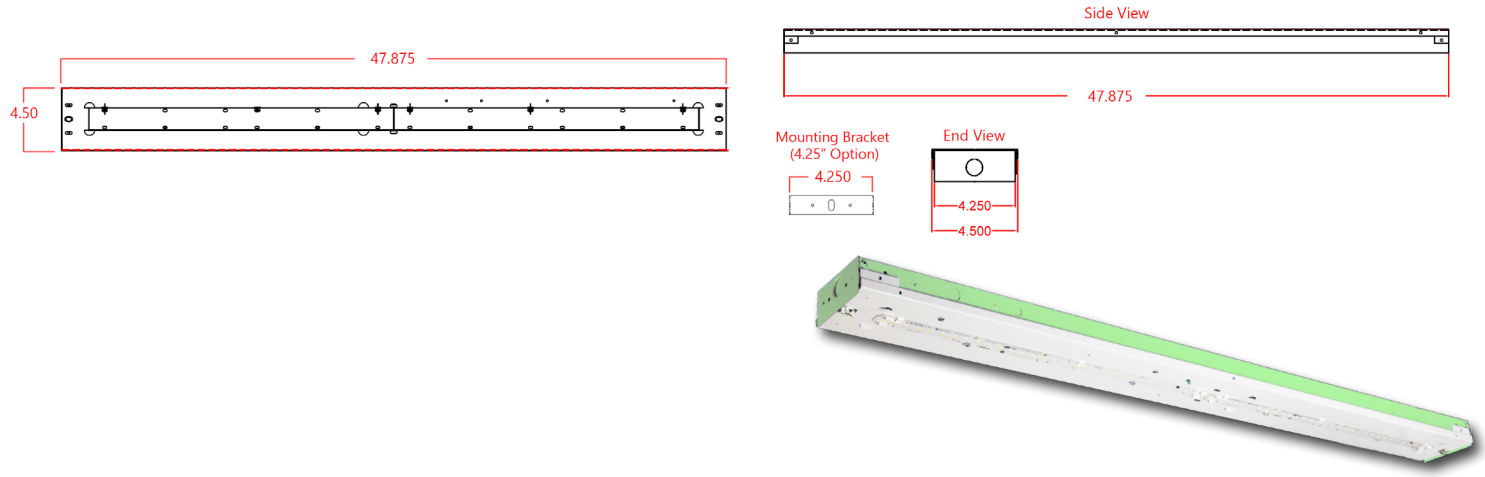
LLC = Luminaire Level Lighting Control  
 \* Additional equipment required. Contact LumenFocus representative for details

Microwave Occupancy Sensor (ZOSMD)

The Leviton OSM3D-DDW (or equivalent) detects motion through low density materials using high frequency electromagnetic waves. This means it can sit discretely behind the RCL G2's frosted lens. The ZOSMD features automatic switching based on motion and ambient light level. ZOSMD option adds step-dimming functionality - standby dimming level 10% / 20% / 30% / 50%. **Max mounting height for ZOSMD 40 feet.**



Schematic:



LUMENFOCUS  
 Re-boardABILITY

The RCL G2 features field replaceable boards and drivers. This allows you to upgrade to more efficient technology in the future. Or, in the rare event of a failure, you can rapidly replace defective components. Re-boardABILITY helps to ensure you won't get stuck with an obsolete light fixture. [Learn more about Re-boardABILITY here.](#)

