

Project: _____
 Location: _____
 Cat. #: _____
 Type: _____
 Quantity: _____

LED

WPK | LED Color Select Traditional Wall Pack

Features:

- High performance LED technology
- Field selectable CCT: 3000K / 4000K / 5000K
- 0-10V dimming drivers down to 10%
- Integrated dusk-to-dawn photocell standard on all models
- Compatible with LED Emergency Backups

Construction:

- Heavy duty, die cast aluminum housing
- Borosilicate glass lens
- Five 1/2" threaded conduit hubs: (1) on back & (1) on all four sides
- Durable dark bronze powder coat finish



Applications:

Suitable for most exterior wall mount applications:

- Industrial
- Commercial
- Retail

Certifications:

- UL listed for wet locations
- IP65
- IK06 Impact Rating
- RoHS Compliant



Ambient Operating Temp.:

- -40°C to 50°C

Warranty:

- 5 year limited system warranty
- see www.LumenFocus.com for complete warranty terms and conditions

Predicted Lifetime:

- 50,000 hrs rated life
- L70 >54,000 hrs (*reported*)
- L70 >100,000 hrs (*calculated*)
- 85.9% lumen maintenance @ 54,000 hrs (*based on LM-80, TM-21 and in-situ laboratory testing*)



Ordering Guide:

example: WPK M MD F UV TBG 8SEL ZPC BZ

Series	Size	Output	Optic	Voltage	Shielding	CRI/CCT	Controls	Finish
WPK			F	UV	TBG	8SEL	ZPC	BZ
WPK	M Medium	LW Low	F Forward	UV 120-277V	TBG Tempered Borosilicate Glass Lens	8SEL 80 CRI/Field Selectable CCT (3000K/4000K/ 5000K)	ZPC Photocell	BZ Bronze
		MD Medium						
		HI High						
	L Large							
		VH Very High						

Accessories (order separately)

WPKEM 12W Field Install Emergency Driver (0°C to 55°C ambient operating temp.)

Performance Chart:

Catalog #	Wattage	CCT	Lumens	LPW	BUG Rating
WPK M LW F UV TBG 8SEL	35	3000K	4885	140	B1-U3-G3
		4000K	5460	156	B1-U3-G3
		5000K	5010	143	B1-U3-G3
WPK M MD F UV TBG 8SEL	55	3000K	7200	131	B1-U3-G4
		4000K	7690	140	B1-U3-G4
		5000K	7450	135	B1-U3-G4
WPK M HI F UV TBG 8SEL	80	3000K	10955	137	B1-U4-G5
		4000K	11925	149	B1-U4-G5
		5000K	11360	142	B1-U4-G5
WPK L VH F UV TBG 8SEL	120	3000K	16410	137	B3-U4-G5
		4000K	17865	149	B3-U5-G5
		5000K	16900	141	B3-U5-G5

Photometric Data:

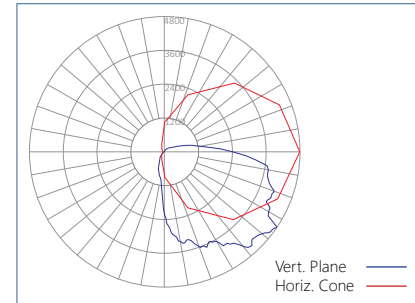
WPK M HI F UV TBG 8SEL

Luminaire Lumens: 10,896 lm

Luminaire Watts: 77.5 W

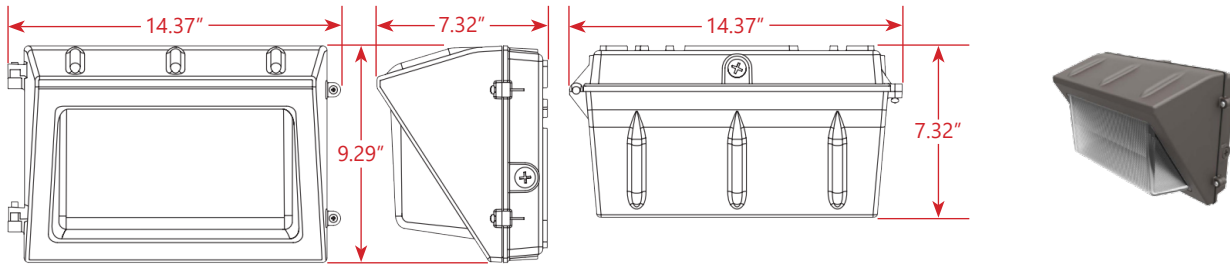
Efficacy: 140.6 LPW

BUG Rating: B1-U4-G5

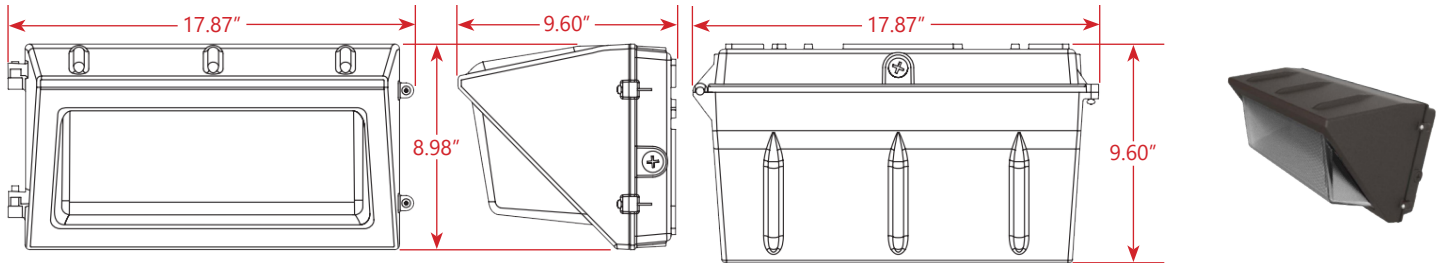


Schematics:

Medium



Large

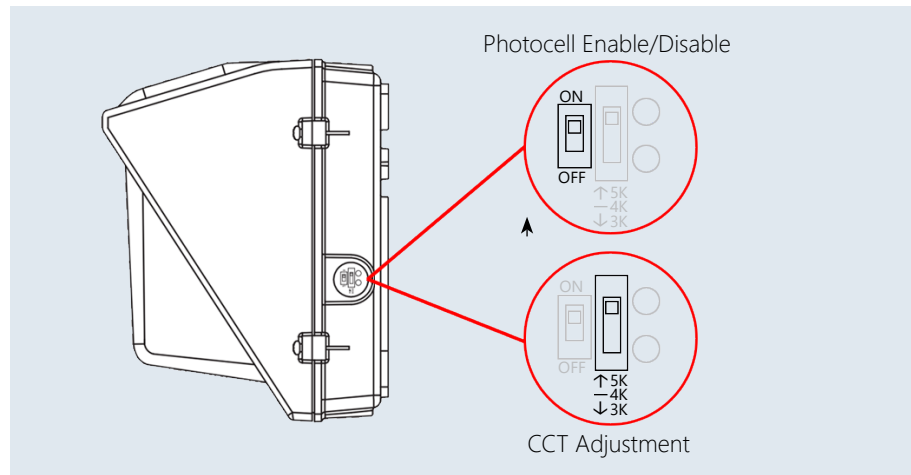


PHOTOCELL ENABLE/DISABLE

This fixture is equipped with a dusk-to-dawn photocell behind the translucent knock-out (KO) cover. Adjust the dip switch to enable (ON) or disable (OFF) the photocell function (see illustrations to the right). Fixture comes preset with photocell enabled unless otherwise noted.

(CCT) ADJUSTMENT

This fixture is equipped with CCT Selection. There is an adjustable dip switch behind the translucent knock-out (KO) cover to change CCT between 5000K, 4000K, and 3000K (see illustrations to the right). Fixture comes preset at 5000K unless otherwise noted.



Photocell Enable/Disable

CCT Adjustment

