



Project: _____
 Location: _____
 Cat. #: _____
 Type: _____
 Quantity: _____

LED

FLK | LED Color Select Flood Light

Features:

- High performance LED technology
- Field selectable CCT: 3000K / 4000K / 5000K
- 0-10V dimming drivers down to 10%
- Multiple mounting options for maximum versatility
- Uniform, wide flood distribution (NEMA 7H x 7V)
- Integrated dusk-to-dawn photocell standard on all models

Applications:

Suitable for most exterior flood light applications:

- Security Lighting
- Parking Lots
- Sign Lighting
- Building Facades

Ambient Operating Temp.:

- -30°C to 45°C (for VL, LW, MD outputs)
- -40°C to 45°C (for HI, VH outputs)

Warranty:

- 5 year limited system warranty
- see www.LumenFocus.com for complete warranty terms and conditions

Construction:

- Die cast aluminum housing with built-in glare visor
- Tempered Glass Lens
- Durable dark bronze powder coat finish

Certifications:

- UL certified for wet locations
- IP65
- IK06 Impact Rating
- RoHS Compliant

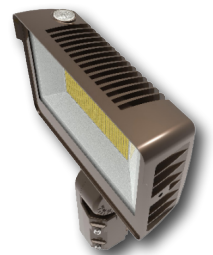
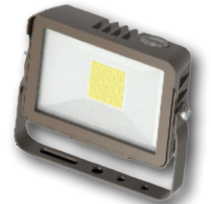


Predicted Lifetime:

- 50,000 hrs rated life
- L70 > 54,000 hrs (*reported*)
- L70 > 100,000 hrs (*calculated*)
- 85.9% lumen maintenance @ 54,000 hrs (*based on LM-80, TM-21 and in-situ laboratory testing*)



COLOR SELECT



Ordering Guide:

example: FLK MD 77 UV 8SEL TK/YK ZPC BZ

Series	Output	Optic	Voltage	CRI/CCT	Mounting	Controls	Finish
FLK		77	UV	8SEL		ZPC	BZ
FLK	VL Very Low LW Low MD Medium	77 NEMA 7H x 7V	UV 120-277V	8SEL 80 CRI/Field Selectable CCT (3000K/4000K/ 5000K)	TK/YK 1/2" Threaded Knuckle and Yoke Mount ⁽¹⁾	ZPC Photocell	BZ Bronze
	HI High VH Very High						

Notes

⁽¹⁾ Not available on HI or VH models

⁽²⁾ Not available on VL, LW, or MD models

Accessories (order separately)

- FLKWG1** Wire guard for VL model
FLKWG2 Wire guard for LW model
FLKWG3 Wire guard for MD model
FLKWG4 Wire guard for HI and VH models



Performance Chart:

Catalog #	Wattage	CCT	Lumens	LPW
FLK VL 77 UV 8SEL	15	3000K	1920	128
		4000K	2175	145
		5000K	2100	140
FLK LW 77 UV 8SEL	35	3000K	4480	128
		4000K	5075	145
		5000K	4900	140
FLK MD 77 UV 8SEL	60	3000K	7320	122
		4000K	8580	143
		5000K	8040	134
FLK HI 77 UV 8SEL	75	3000K	9150	122
		4000K	10725	143
		5000K	10050	134
FLK VH 77 UV 8SEL	100	3000K	12200	122
		4000K	14300	143
		5000K	13400	134

Photometric Data:

FLK VH 77 UV 8SEL

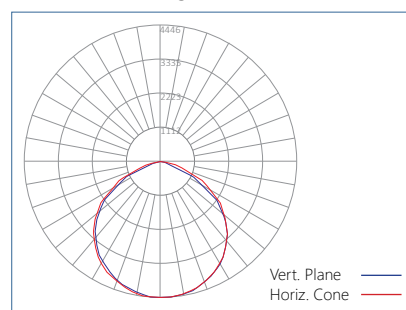
Luminaire Lumens: 12,062 lm

Luminaire Watts: 99.2 W

Efficacy: 121.6 LPW

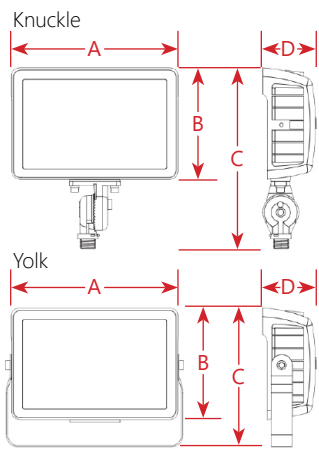
Horizontal Beam Angle: 113.5°

Vertical Beam Angle: 111.0°

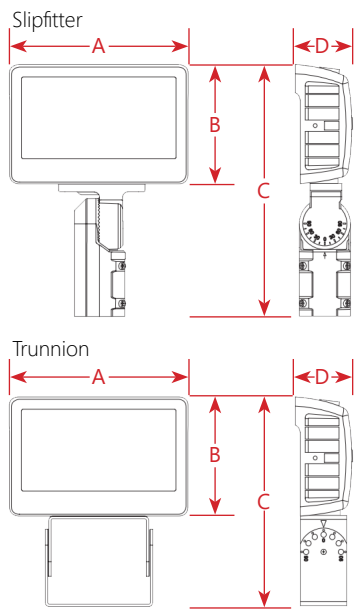


Schematics:

FLK VL | LW | MD



FLK HI | VH



Output	Mounting	A	B	C	D
VL	TK	6.22"	4.76"	8.35"	2.40"
	YK	6.22"	4.76"	6.22"	2.40"
LW	TK	7.40"	5.51"	8.98"	2.75"
	YK	7.40"	5.51"	6.97"	2.75"
MD	TK	8.58"	5.91"	9.49"	2.75"
	YK	8.58"	5.91"	7.13"	2.75"
HI	SK	10.55"	7.05"	14.84"	3.38"
	TR	10.55"	7.05"	12.36"	3.38"
VH	SK	10.55"	7.05"	14.84"	3.38"
	TR	10.55"	7.05"	12.36"	3.38"

PHOTOCELL ENABLE/DISABLE

This fixture is equipped with a dusk-to-dawn photocell behind the translucent knock-out (KO) cover. Adjust the dip switch to enable (ON) or disable (OFF) the photocell function (see illustrations to the right). Fixture comes preset with photocell enabled unless otherwise noted.

(CCT) ADJUSTMENT

This fixture is equipped with CCT Selection. There is an adjustable dip switch behind the translucent knock-out (KO) cover to change CCT between 5000K, 4000K, and 3000K (see illustrations to the right). Fixture comes preset at 5000K unless otherwise noted.

