

Project: _____
 Location: _____
 Cat. #: _____
 Type: _____
 Quantity: _____

LED

EWL G2 2 | LED Wrap

Features:

- High performance LED technology
- 90+ CRI standard
- 0-10V dimming drivers standard
- DALI drivers available
- Field replaceable LED boards and drivers
- Can be surface, stem, or cable mounted as individual units or in continuous rows

Applications:

Suitable for industrial, retail, and institutional applications

- Warehouse
- Manufacturing Facility
- Stock Room
- Classroom

Predicted Lifetime:

- L70: $\geq 129,000$ hrs (calculated)
- L80: $\geq 81,000$ hrs (calculated)
- L90: $\geq 39,000$ hrs (reported)
- 85% lumen maintenance @ 60,000 hrs
(based on LM80 and insitu laboratory testing)

Construction:

- Die-formed heavy-gauge cold rolled steel
- Pre-painted with a highly durable, highly reflective white finish
- Clear Prismatic Acrylic Lens

Certifications:

- UL 1598 listed for US and Canada, suitable for damp locations



Warranty:

- 5 year limited system warranty - see www.LumenFocus.com for complete warranty terms and conditions
- 10 year warranty option available on specific models
(Not available on all models. Certain conditions apply. Consult factory or sales representative for details.)



Ordering Guide:

example: EWL G2 2 MD UV CPA 940 11" QC

| Series | Length | Output | Voltage | Shielding | CRI/CCT | Width | Hanging | Controls | Options |
|-----------|----------|---|---|--|--|--|--|---|--|
| EWL G2 | 2 | | | CPA | | | | | |
| EWL Gen 2 | 2' 2' | VL Very Low LW Low MD Medium HI High VH Very High | UV 120-277 34 347V | CPA Clear Prismatic Acrylic | 930 90 CRI/3500K 935 90 CRI/3500K 940 90 CRI/4000K 950 90 CRI/5000K | 9" 9.25" Width 11" 11.25" Width 16" 16.00" Width | Blank None (Surface or Pendant Mount) VC V-Chain Hangers QC 10' Quick Hang Cable Kit QC15 15' Quick Hang Cable Kit QC20 20' Quick Hang Cable Kit | Blank No Controls ZOS Occupancy Sensor (On/Off) ZOFD1 Leviton Bluetooth-enabled Programmable Dimming/ Occupancy/Daylight Harvesting Sensor with Grouping (120- 277V) ⁽¹⁾ ZOFDU Leviton Bluetooth-enabled Programmable Dimming/ Occupancy/Daylight Harvesting Sensor with Grouping, Scheduling (120-480V) ⁽¹⁾ Z221BL_ Wattstopper Programmable Photo/Motion Multi-Voltage Sensor (high/low/off) ⁽²⁾ Z321BL_ Wattstopper Bluetooth-enabled Programmable Photo/Motion Multi-Voltage Sensor (high/low/off) ⁽²⁾ ZOSMD Microwave Daylight/Motion Sensor With Step-Dimming (High/Low/Off) ⁽³⁾ ZPC Photocell ZIFS Douglas IFS Sensor with Dimming/Occupancy/Daylight Harvesting with Newtork Capabilities ⁽⁴⁾ ZIFC Douglas IFC Controller with Newtork Capabilities ⁽⁴⁾ ZENLO Enlighted One Micro Sensor with Dimming/Occupancy/Daylight Harvesting ⁽⁵⁾ ZENLC Enlighted Connected Micro Sensor with Dimming/Occupancy/ Daylight Harvesting ⁽⁵⁾ ZENLI Enlighted IoT Micro Sensor with Dimming/Occupancy/Daylight Harvesting ⁽⁵⁾ | Blank No Options EXT10 10-Year Extended Warranty ⁽⁶⁾ F Fuse CC Conformal Coating LVL 0-10V Dimming Leads for Easy Field Access BAA Buy American Act Compliant |

Notes

⁽¹⁾ Max mounting height 40'. See Page 4 for more details.

⁽²⁾ " " = lens type. See Page 4 for lens descriptions.

⁽³⁾ Max mounting height 40'. See Page 4 for more details.

⁽⁴⁾ Max ceiling height for Douglas sensors: 16.4 feet.

See Page 5 for more details on advanced controls.

⁽⁵⁾ Max ceiling height for Enlighted sensors: 15 feet. See Page 5 for more details on advanced controls.

⁽⁶⁾ Not available on all models. Certain conditions apply. Consult factory or sales representative for details.

Controls Accessories (order separately)



For Douglas Controls

| | |
|--------------|---------------------------------|
| BT-DMSW-U-A | Bluetooth 1 Zone Dimmer |
| BT-4BTSW-U-A | Bluetooth 4-Button Wall Station |
| BT-8BTSW-U-A | Bluetooth 8-Button Wall Station |



For Enlighted Controls

| | |
|------------|---------------------------------|
| WS-2-00 | Enlighted Remote Control Wall |
| Switch | (for Enlighted Connected & IoT) |
| WS-2-00-IL | Enlighted Remote Control Wall |
| Switch | (for Enlighted One) |



For WattStopper Controls

| | |
|----------|------------------------------|
| FSIR-100 | Wireless IR Programming Tool |
| | (For Z211Lx) |



For Leviton Intellect Solo Controls

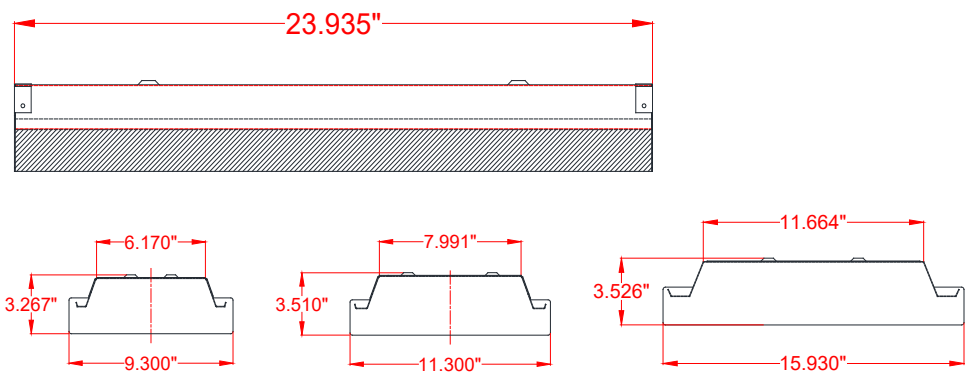
| | |
|-----------|------------------------------|
| ZLSOR-RA1 | Wireless IR Programming Tool |
| | (For ZSOL) |



Performance Chart:

| Catalog # | Watts | Lumens (930) | LPW (930) | Lumens (935) | LPW (935) | Lumens (940) | LPW (940) | Lumens (950) | LPW (950) |
|---------------------------|-------|-----------------|--------------|-----------------|--------------|-----------------|--------------|-----------------|--------------|
| EWL G2 2 VL UV CPA 9xx-9" | 11.8 | 1496.7 | 126.9 | 1503.0 | 127.4 | 1538.7 | 130.4 | 1538.7 | 130.4 |
| EWL G2 2 LW UV CPA 9xx-9" | 15.8 | 2059.4 | 130.1 | 2068.0 | 130.7 | 2117.2 | 133.8 | 2117.2 | 133.8 |
| EWL G2 2 MD UV CPA 9xx-9" | 22.7 | 3027.1 | 133.2 | 3039.9 | 133.8 | 3112.1 | 137.0 | 3112.1 | 137.0 |
| EWL G2 2 HI UV CPA 9xx-9" | 31.0 | 4019.4 | 129.8 | 4036.3 | 130.3 | 4132.2 | 133.4 | 4132.2 | 133.4 |
| EWL G2 2 VH UV CPA 9xx-9" | 36.7 | 5022.0 | 137.0 | 5043.2 | 137.6 | 5163.0 | 140.8 | 5163.0 | 140.8 |

Schematic:



The EWL G2 is available in three width options: 9", 11", and 16"



The EWL G2 features field replaceable boards and drivers. This allows you to upgrade to more efficient technology in the future. Or, in the rare event of a failure, you can rapidly replace defective components. Re-boardABILITY helps to ensure you won't get stuck with an obsolete light fixture. [Learn more about Re-boardABILITY here.](#)

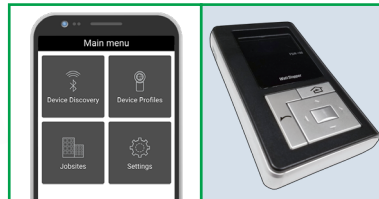


Controls Summary:

| Control Code | Type | Capabilities | Communication |
|--------------|-----------------------------------|--|---|
| ZOFD1 | Motion (PIR), Daylight Harvesting | High/Low/Off, High-End Trim, Grouping | Wired 0-10V, Programmable via Bluetooth App (iOS, Android) |
| ZOFDU | Motion (PIR), Daylight Harvesting | High/Low/Off, High-End Trim, Grouping, Scheduling | Wired 0-10V, Programmable via Bluetooth App (iOS, Android) |
| Z221BLx | Motion (PIR), Photosensor | High/Low/Off, High-End Trim | Wired 0-10V, Programmable via IR remote (sold separately) |
| Z321BLx | Motion (PIR), Daylight Harvesting | High/Low/Off, High-End Trim | Wired 0-10V, Programmable via Bluetooth App (iOS, Android) |
| ZOSMD | Motion (Microwave), Photosensor | On/Low/Off | Wired 1-10V |
| ZIFS | Motion (PIR), Daylight Harvesting | High/Low/Off, High-End Trim, Grouping, LLLC (Douglas Lighting Controls-Dialog)* | Wireless Bluetooth Mesh, Programmable via iOS App or Douglas Dialog Software |
| ZIFC | Controller, No Sensors | High/Low/Off, High-End Trim, Grouping, LLLC (Douglas Lighting Controls-Dialog)* | Wireless Bluetooth Mesh, Programmable via iOS App or Douglas Dialog Software |
| ZENLO | Motion (PIR), Daylight Harvesting | High/Low/Off, High-End Trim, Grouping, Upgradable to Connected (ZENLC) or IoT (ZENLI) | Wireless Bluetooth Low Energy Mesh, Programmable via Enlighted Room Controller WS-2-00-IL (sold separately) |
| ZENLC | Motion (PIR), Daylight Harvesting | High/Low/Off, High-End Trim, Grouping, Scheduling*, Energy Monitoring*, BMS Integration*, LLLC (Enlighted IoT)*, LLLC (Enlighted IoT)* | Wireless Bluetooth Low Energy Mesh, Programmable via Enlighted IoT Software |
| ZENLI | Motion (PIR), Daylight Harvesting | High/Low/Off, High-End Trim, Grouping, Scheduling*, Energy Monitoring*, BMS Integration*, LLLC (Enlighted IoT)*, Space - Building Utilization*, Where - Real Time Location Services* | Wireless Bluetooth Low Energy Mesh, Programmable via Enlighted IoT Software |

LLLC = Luminaire Level Lighting Control

* Additional equipment required. Contact LumenFocus representative for details



Middle: Phone app interface for Z321B. Right: FSIR-100

Dimming Sensors (Z221B/Z321B)

- The Wattstopper FSP sensor provides multi-level control based on motion and/or daylight contribution
- Comes pre-installed on the end cap
- Rated for cold locations
- Parameters for Bluetooth-enabled Z321B adjustable via phone app - iOS or Android
- Parameters adjustable via wireless configuration tool (FSIR-100 - sold separately)
- Three lenses available, tailored for the ideal detection area and mounting height:
 - L2: 360° lens, maximum coverage 48', diameter from 8' height
 - L3: 360° lens, maximum coverage 40', diameter from 20' height
 - L7: 360° lens, maximum coverage 100', diameter from 40' height

Smart Sensors (ZOFD1/ZOFDU)

The ZOFDx option includes high bay and low bay lenses along with aisleway masks that can easily be installed or swapped out in the field. The high bay lens is good for 20'-40' mounting heights, while the low bay lens is good for 8'-20' mounting heights.



- Leviton Smart IP66 passive infrared (PIR) sensors
- Features mesh grouping (16 devices per group), occupancy sensing, daylight harvesting, scheduling (for ZOFDU only), single-level switching
- Comes pre-installed on the end cap
- Rated for cold locations
- Configurable through the Leviton Smart Sensor App using a smartphone or other Bluetooth-enabled iOS or Android device

Microwave Occupancy Sensor (ZOSMD)

The Leviton OSM3D-DDW (or equivalent) detects motion through low density materials using high frequency electromagnetic waves. This means it can sit discretely behind the EWL's prismatic lens. The ZOSMD features automatic switching based on motion and ambient light level. ZOSMD option adds step-dimming functionality - standby dimming level 10% / 20% / 30% / 50%. Max mounting height for ZOSMD is 40 feet.



Universal Douglas: Cloud-based controls

The EWL can be equipped with the Douglas Bluetooth Intelligent Fixture Sensor (IFS) as well as the Intelligent Fixture Controller. Max mounting height is 16.4 feet.

IFS



- Occupancy, vacancy, partial-on and partial-off
- Occupancy timeout adjustable from 5 to 90 minutes
- Primary and secondary daylight harvesting

IFC



- Listed for emergency control when used on dedicated emergency power bus
- Same occupancy and daylight controls as the IFS when networked with one or more IFS sensors

Available with both IFS and IFC:

- 0-10V dimming with dim-to-off
- Bluetooth beacon for digital ceiling, IoT and location service strategies
- 150-foot clear line of sight, 50 feet through standard walls
- May be used with dual-channel, tunable white LED drivers providing auxiliary power and dim-to-off capability
- Commissioning through Douglas Lighting Controls, Inc. app from Apple app store
- **Note:** Additional equipment required for IoT capabilities

CheckLight® Energy Management System

Douglas controls can be integrated with the CheckLight® Energy Management system. This system can help you uncover energy conversion opportunities, create conservation strategies, analyze lighting load inefficiencies, and make configuration changes from anywhere with Douglas' user-friendly interface. You can get measurements, reports, and control your system from a web-based application.

CheckLight® has the capability to look at different facilities within a portfolio and use data benchmarks to compare building performances.

- Find energy conservation opportunities
- Create energy saving strategies
- Analyze load inefficiencies
- Optimize energy management

Enlighted: All-in-one sensors, upgradeable systems

Enlighted's SMART Micro Sensor is an all-in-one unit: task tuning, high-end trimming, daylight harvesting, and occupancy/vacancy detection. Max installation height is 15 feet.

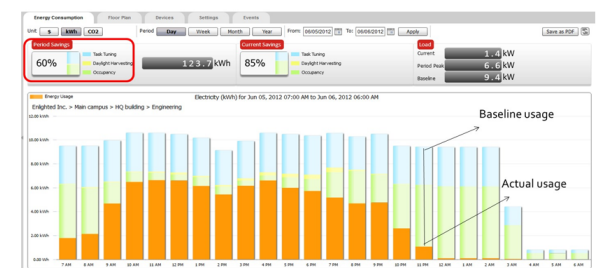
Enlighted sensors come standard with the Enlighted One system (the "ZENLO" option). Enlighted Connected ("ZENLC") offers even more options. The Enlighted IoT ("ZENLI") option allows the full implementation of Enlighted's services. Each system can be fully upgraded to the next tier in the future. So if you start with Enlighted One but want to add energy reporting or building management systems integration in the future, you can.



Real-time data analytics

Enlighted's control units compile data in real-time, which can be viewed via the Energy Manager. The Energy Manager is part of the Enlighted Connected and Enlighted IoT configurations.

- Real-time measurements and verification of energy savings
- Space analytics - data can be compiled into motion trails and heat maps
- Analyze traffic density and congestion in a space



| Enlighted Capabilities* | Enlighted One (ZENLO) | Enlighted Connected (ZENLC) | Enlighted IoT (ZENLI) |
|--|-----------------------|-----------------------------|-----------------------|
| Motion and Switch Groups | ✓ | ✓ | ✓ |
| Daylight Harvesting | ✓ | ✓ | ✓ |
| Schedule Lighting | | ✓ | ✓ |
| Energy Reporting & Optimization | | ✓ | ✓ |
| Environment Data & Lighting Controls API | | ✓ | ✓ |
| Building Management System Integration | | ✓ | ✓ |
| Where & Space Applications | | | ✓ |
| Location & Occupancy APIs & Beacons | | | ✓ |
| Future App & API Ready | | | ✓ |

Note: Additional equipment required ZENLC and ZENLI

Learn more about our available advanced controls options here:

www.lumenfocus.com/controls-overview

© 2022 Enlighted for all Enlighted content and images.

© 2022 Douglas Lighting Controls, Inc. for all Douglas content and images. The Bluetooth® word, mark and logos are registered trademarks owned by the Bluetooth SIG, Inc. and any use of such marks by Douglas Lighting Controls is under license. Other trademarks and trade names are those of their respective owners.

