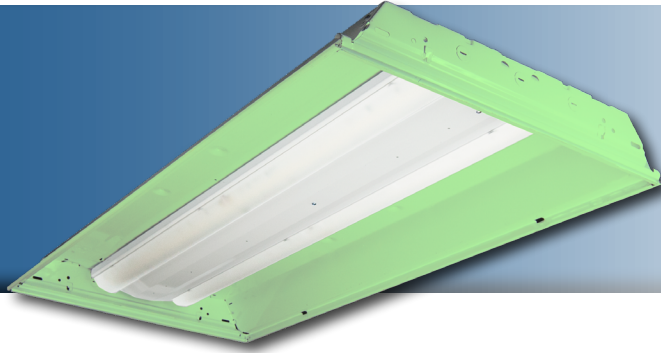


**Note:** This product has been discontinued and replaced with the RTL G2.



Project: \_\_\_\_\_  
Location: \_\_\_\_\_  
Cat. #: \_\_\_\_\_  
Type: \_\_\_\_\_  
Quantity: \_\_\_\_\_

## LED

## RTL 24 | LED Troffer Retrofit Kit

### Features:

- High performance LED technology
- 0-10V dimming drivers standard
- Field replaceable LED boards and drivers
- Frosted diffuser available to help minimize glare and improve aesthetics
- Available in multiple lumen output packages for maximum flexibility
- Easy lift and shift installation saves on labor costs

### Applications:

For use in existing 2x4 troffer luminaires.

- Office
- Retail
- Classrooms
- Healthcare Facilities

### Predicted L70 Lifetime:

- Up to 189,000 hrs (calculated)  
*(L70 information for specific configurations available upon request)*
- For BAA compliant configurations - up to 189,000 hrs (calculated)

### Construction:

- Precision brake formed from heavy gauge cold rolled steel
- Highly durable, highly reflective white finish

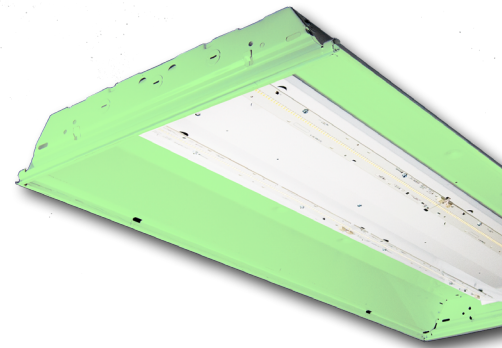
### Certifications:

- UL 1598 listed for US and Canada, suitable for damp locations



### Warranty:

- 5 year limited system warranty
- See [www.LumenFocus.com](http://www.LumenFocus.com) for complete warranty terms and conditions
- 10 year warranty option available on specific models  
*(Not available on all models. Certain conditions apply. Consult factory or sales representative for details.)*



Ordering Guide:

example: RTL 24 LW UV FR 840 ZOSMD EM

Series	Size	Output	Voltage	Shielding	CRI/CCT	Controls	Options
RTL	24						
RTL	24 2' x 4'	<b>VL</b> Very Low	<b>UV</b> 120-277	<b>Blank</b> No Shielding	<b>835</b> 80 CRI/3500K	<b>Blank</b> No Controls	<b>Blank</b> No Options
		<b>LW</b> Low	<b>34</b> 347V	<b>FR</b> Frosted Acrylic Diffusers	<b>840</b> 80 CRI/4000K	<b>ZOSM</b> Microwave Occupancy Sensor with Photocell (On/Off) <sup>(1)</sup>	<b>EXT10</b> 10-Year Extended Warranty <sup>(2)</sup>
		<b>MD</b> Medium			<b>850</b> 80 CRI/5000K	<b>ZOSMD</b> Microwave Occupancy Sensor with Photocell (On/Off/Dim) <sup>(1)</sup>	<b>EM</b> Emergency Pack <sup>(3)</sup>
		<b>HI</b> High					<b>LVL</b> 0-10V Dimming Leads for Easy Field Access
		<b>VH</b> Very High					<b>BAA</b> Buy American Act Compliant
		<b>SH</b> Super High					

Notes

- <sup>(1)</sup> 120-277V only. See page 4 for more details.
- <sup>(2)</sup> Not available on all models. Certain conditions apply. Consult factory or sales representative for details.
- <sup>(3)</sup> 120-277V only / 0°C-50°C ambient.

Accessories (order separately)

- **A12(x)** Pattern 12 Prismatic Acrylic Lens (x = specify exact dimensions)
- **PW(x)** Prismatic White Acrylic Lens (x = specify exact dimensions)
- **A23F(x)** Frosted High Efficiency Pattern 23 Prismatic Acrylic Lens (x = specify exact dimensions)

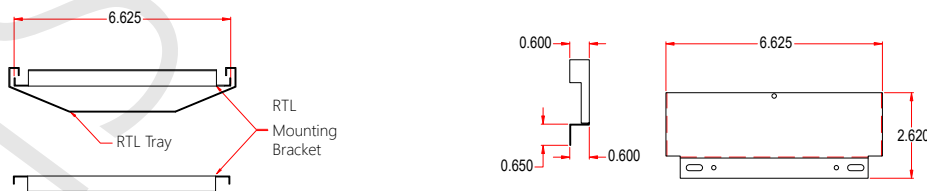


Performance Chart:

Catalog #	Lumens	Watts	LPW	Catalog #	Lumens	Watts	LPW	Catalog #	Lumens	Watts	LPW
RTL 24 VL UV 835	3820	26	146.9	RTL 24 VL UV 840	3938	26	151.5	RTL 24 VL UV 850	4056	26	156.0
RTL 24 LW UV 835	4328	30	144.3	RTL 24 LW UV 840	4462	30	148.7	RTL 24 LW UV 850	4595	30	153.2
RTL 24 MD UV 835	5939	44	135.0	RTL 24 MD UV 840	6122	44	139.1	RTL 24 MD UV 850	6306	44	143.3
RTL 24 HI UV 835	6930	54	128.3	RTL 24 HI UV 840	7144	54	132.3	RTL 24 HI UV 850	7359	54	136.6
RTL 24 VH UV 835	7789	64	121.7	RTL 24 VH UV 840	8029	64	125.5	RTL 24 VH UV 850	8270	64	129.2
RTL 24 SH UV 835	10041	68	148.8	RTL 24 SH UV 840	10351	68	153.4	RTL 24 SH UV 850	10662	68	158.0

Adjustment Factor: FR diffuser = 0.958

Schematic:

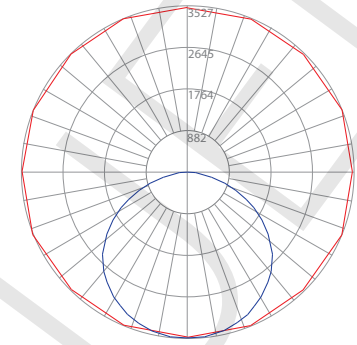


Photometric Data:

RTL 24 SH UV 850

Test No.: LLIA000673-002  
 Luminaire Lumens: 10,662 lm  
 Luminaire Watts: 67.5W  
 Efficacy: 158.0 LPW  
 Spacing Criterion (0-180): 1.30  
 Spacing Criterion (90-270): 1.32

Luminance Data (cd/sq.m)				
Angle In Degrees	Average 0-Deg	Average 45-Deg	Average 90-Deg	
45	5059	5118	5111	
55	4908	5043	5082	
65	4533	4783	5000	
75	3672	4422	5331	
85	1594	616	665	



— Vert. Plane  
 — Horiz. Cone

Zone	Lumens	%Fixt
0-20	1293.18	12.10
0-30	2774.19	26.00
0-40	4600.68	43.10
0-60	8341.49	78.20
0-80	10560.01	99.00
0-90	10662.46	100.00
90-120	0.00	0.00
90-130	0.00	0.00
90-150	0.00	0.00
90-180	0.00	0.00
0-180	10662.46	100.00

Coefficients Of Utilization - Zonal Cavity Method  
 Effective Floor Cavity Reflectance 0.20

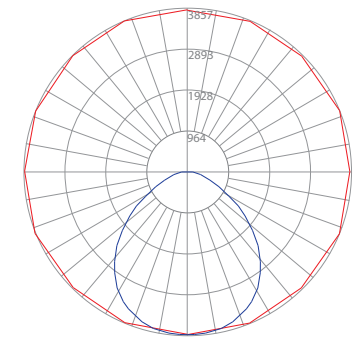
RC	80				70				50				30				
RW	70	50	30	10	70	50	30	10	50	30	10	50	30	10	50	30	10
0	119	119	119	119	116	116	116	116	111	111	111	106	106	106			
1	109	104	100	96	106	102	98	94	97	94	91	94	91	89			
2	99	90	83	78	96	88	82	77	85	79	75	82	77	73			
3	90	79	71	64	87	77	70	63	74	68	62	72	66	61			
4	82	70	61	54	80	68	60	54	66	59	53	64	57	52			
5	75	62	53	46	73	61	52	46	59	51	45	57	50	45			
6	69	56	47	40	67	55	46	40	53	45	40	51	44	39			
7	64	50	42	35	62	50	41	35	48	40	35	47	40	35			
8	60	46	37	31	58	45	37	31	44	36	31	43	36	31			
9	56	42	34	28	54	42	34	28	40	33	28	39	33	28			
10	52	39	31	26	51	38	31	25	37	30	25	36	30	25			

Tested in accordance with IES standards utilizing absolute photometry per LM-79-08

RTL 24 SH UV 850 w/ A12 lens

Test No.: LLIA000673-001  
 Luminaire Lumens: 9,407 lm  
 Luminaire Watts: 67.3W  
 Efficacy: 139.8 LPW  
 Spacing Criterion (0-180): 1.26  
 Spacing Criterion (90-270): 1.24

Luminance Data (cd/sq.m)				
Angle In Degrees	Average 0-Deg	Average 45-Deg	Average 90-Deg	
45	4998	5031	5072	
55	3984	4086	4195	
65	3083	2812	3139	
75	2617	2199	2956	
85	3038	3269	4097	



— Vert. Plane  
 — Horiz. Cone

Zone	Lumens	%Fixt
0-20	1408.51	15.00
0-30	2987.79	31.80
0-40	4837.54	51.40
0-60	7933.27	84.30
0-80	9199.35	97.80
0-90	9402.18	99.90
90-120	4.95	0.10
90-130	4.95	0.10
90-150	4.95	0.10
90-180	4.95	0.10
0-180	9407.14	100.00

Coefficients Of Utilization - Zonal Cavity Method  
 Effective Floor Cavity Reflectance 0.20

RC	80				70				50				30				
RW	70	50	30	10	70	50	30	10	50	30	10	50	30	10	50	30	10
0	119	119	119	119	116	116	116	116	111	111	111	106	106	106			
1	109	105	101	97	107	103	99	96	98	95	93	95	92	90			
2	100	93	86	81	98	91	85	80	87	82	78	84	80	76			
3	92	82	74	68	90	81	73	68	78	72	67	75	70	65			
4	85	73	65	59	83	72	64	58	70	63	58	67	61	57			
5	78	66	57	51	76	65	57	51	63	56	50	61	55	50			
6	72	60	51	45	71	59	51	45	57	50	44	55	49	44			
7	67	54	46	40	66	54	46	40	52	45	40	51	44	39			
8	63	50	42	36	61	49	41	36	48	41	36	47	40	35			
9	59	46	38	33	57	45	38	32	44	37	32	43	37	32			
10	55	42	35	30	54	42	34	30	41	34	29	40	34	29			

Tested in accordance with IES standards utilizing absolute photometry per LM-79-08



### ZOSM option: Leviton High Frequency Microwave Sensor

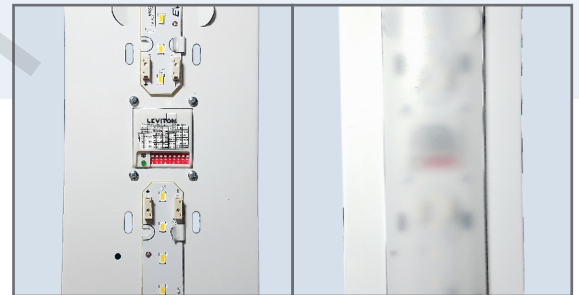
The RTL can be equipped with an integrated Leviton high frequency microwave sensor (“ZOSM” option). The ZOSM detects motion through low density materials allowing it to be installed out of site, under the lens. The high frequency waves offer less interference and false tripping than traditional sensing technology for reliable occupancy applications. The integrated daylighting sensor detects natural light and turns lights ON or keeps lights OFF in response to available natural light or the daylight set point when motion is detected.

- Features:
- Automatic switching based on motion and ambient light level
  - Designed to detect movement behind low-density fixture materials or behind objects made of plastic or glass
  - up to 32’ mounting height
  - Detection Zone: 52’ diameter x 32’ Height Max
  - IP20 rated
  - 120-277V

### ZOSMD option: Leviton 0-10V High Frequency Microwave Sensor

The RTL can be equipped with an integrated Leviton 0-10V dimming high frequency microwave sensor (“ZOSMD” option). The ZOSMD detects motion through low density materials allowing it to be installed out of site, under the lens. The high frequency waves offer less interference and false tripping than traditional sensing technology for reliable occupancy applications. The integrated daylighting sensor detects natural light and turns lights ON or keeps lights OFF in response to available natural light or the daylight set point when motion is detected.

- Features:
- Automatic switching or dimming based on motion
  - Ambient light override
  - Designed to detect movement behind low-density fixture materials or behind objects made of plastic or glass
  - up to 49’ mounting height
  - Detection Zone: 52’ diameter x 49’ Height Max
  - Standby Dimming Level: 10% / 20% / 30% / 50%
  - IP20 rated
  - 120-277V



### LUMENFOCUS Re-boardABILITY

The RTL features field replaceable boards and drivers. This allows you to upgrade to more efficient technology in the future. Or, in the rare event of a failure, you can rapidly replace defective components. Re-boardABILITY helps to ensure you won’t get stuck with an obsolete light fixture. [Learn more about Re-boardABILITY here.](#)

