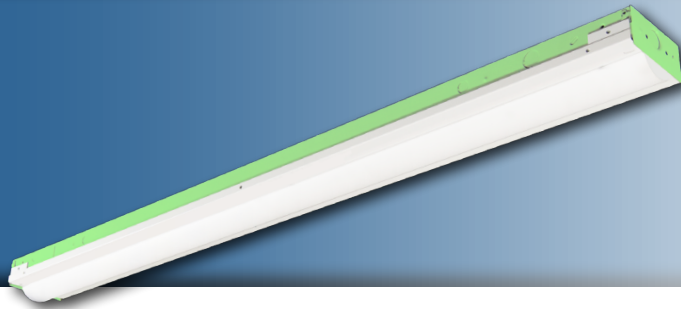


**Note:** This product has been discontinued and replaced with the RCL G2.



Project: \_\_\_\_\_  
 Location: \_\_\_\_\_  
 Cat. #: \_\_\_\_\_  
 Type: \_\_\_\_\_  
 Quantity: \_\_\_\_\_

**LED**

## RCL 6 | LED Channel Retrofit Kit

### Features:

- High performance LED technology
- 0-10V dimming drivers standard
- Field replaceable LED boards and drivers
- Frosted diffuser available to help minimize glare and improve aesthetics
- A wide variety of lumen packages and lengths allows for flexibility in design and helps maximize energy savings
- Saves on installation cost, material cost, and waste
- Advanced controls available

### Applications:

Suitable for most commercial, industrial and institutional applications

- Office
- Retail
- Warehouse
- Coves
- Valences

### Predicted L70 Lifetime:

- Up to 189,000 hrs (calculated)  
*(L70 information for specific configurations available upon request)*
- For BAA compliant configurations - up to 189,000 hrs (calculated)

### Construction:

- Precision brake formed from heavy gauge cold rolled steel
- Highly durable, highly reflective white finish

### Certifications:

- UL 1598 listed for US and Canada, suitable for damp locations

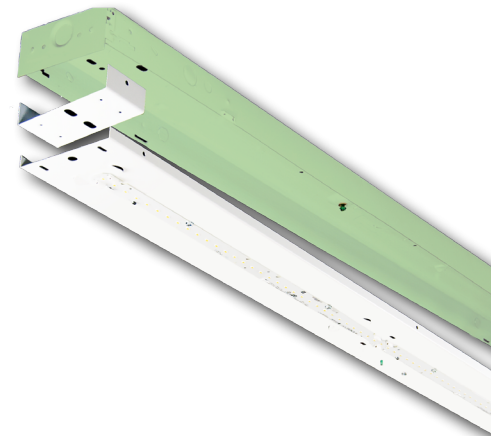


### Ambient Operating Temp.:

- -30°C to 40°C

### Warranty:

- 5 year limited system warranty - see [www.LumenFocus.com](http://www.LumenFocus.com) for complete warranty terms and conditions
- 10 year warranty option available on specific models  
*(Not available on all models. Certain conditions apply. Consult factory or sales representative for details.)*



Ordering Guide:

example: RCL 6 MD UV FR 840 4.25" ZOSMD EM1

Series	Length	Output	Voltage	Shielding	CRI/CCT	Channel Width	Controls	Options
RCL	6							
RCL	6 6'	<b>LW</b> Low	<b>UV</b> 120-277	<b>Blank</b> No Lenses	<b>835</b> 80 CRI/3500K	<b>x.xx"</b> Specify Channel Width (in inches)  <b>VAR</b> Variable - Adjusts to fit channel widths from 4.00" to 5.00"	<b>Blank</b> No Controls  <b>ZOSMD</b> Microwave Occupancy Sensor with Photocell (On/Off/Dim) <sup>(1)</sup>  <b>ZIFS</b> Douglas IFS Sensor with Dimming/Occupancy/Daylight Harvesting with Newtork Capabilities <sup>(2)</sup>  <b>ZIFC</b> Douglas IFC Controller with Newtork Capabilities <sup>(3)</sup>  <b>ZENLO</b> Enlighted One Micro Sensor with Dimming/Occupancy/Daylight Harvesting <sup>(4)</sup>  <b>ZENLC</b> Enlighted Connected Micro Sensor with Dimming/Occupancy/Daylight Harvesting <sup>(4)</sup>  <b>ZENLI</b> Enlighted IoT Micro Sensor with Dimming/Occupancy/Daylight Harvesting <sup>(4)</sup>	<b>Blank</b> No Options  <b>EXT10</b> 10-Year Extended Warranty <sup>(5)</sup>  <b>EM1</b> Emergency Pack - Up to 8W <sup>(6)</sup>  <b>EM2</b> Emergency Pack - Up to 16W <sup>(6)</sup>  <b>CC</b> Conformal Coating  <b>LVL</b> 0-10V Dimming Leads for Easy Field Access  <b>BAA</b> Buy American Act Compliant
		<b>MD</b> Medium		<b>FR</b> Frosted Acrylic Diffusers	<b>840</b> 80 CRI/4000K			
		<b>HI</b> High			<b>850</b> 80 CRI/5000K			
		<b>VH</b> Very High						

Notes

- <sup>(1)</sup> 120-277V only. Max mounting height 49'. See page 4 for more details.
- <sup>(2)</sup> Max mounting height 16.4'. See page 5 for more details.
- <sup>(3)</sup> See page 5 for more details.
- <sup>(4)</sup> Max mounting height 15'. See page 5 for more details.
- <sup>(5)</sup> Not available on all models. Certain conditions apply. Consult factory or sales representative for details.
- <sup>(6)</sup> 120-277V only / 0°C-50°C ambient.

Accessories (order separately)

**STD(480V)** 480V to 277V Step Down Transformer

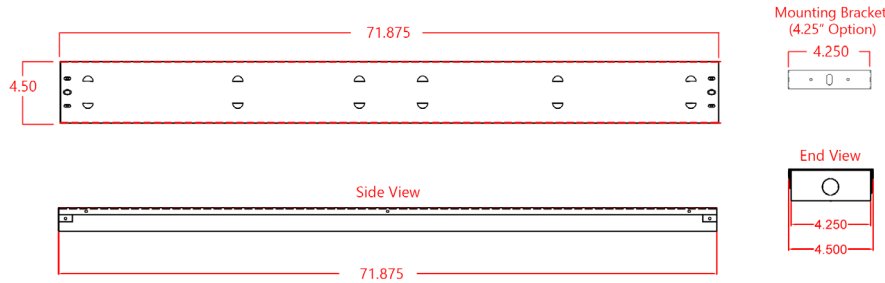
Controls Accessories (order separately)

**For Douglas Controls**  
 BT-DMSW-U-A Bluetooth 1 Zone Dimmer  
 BT-4BTSW-U-A Bluetooth 4-Button Wall Station  
 BT-8BTSW-U-A Bluetooth 8-Button Wall Station

**For Enlighted Controls**  
 WS-2-00 Enlighted Remote Control Wall Switch (for Enlighted Connected & IoT)  
 WS-2-00-IL Enlighted Remote Control Wall Switch (for Enlighted One)



Schematic:

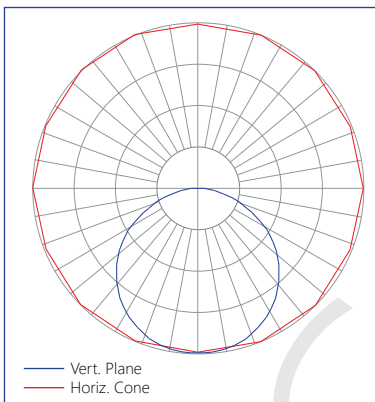


Performance Chart:

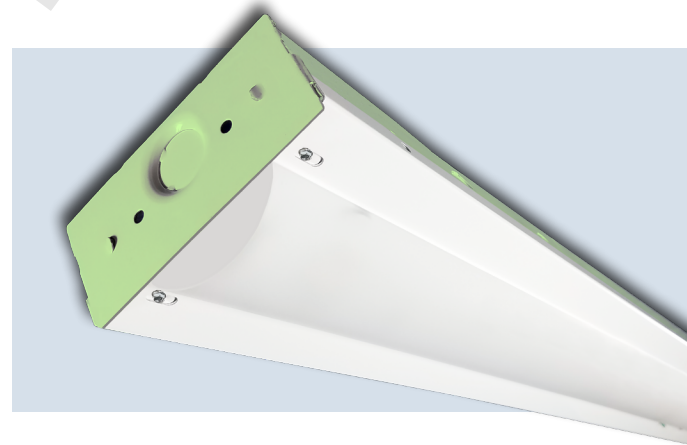
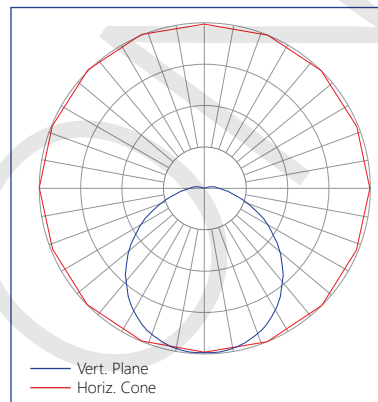
Catalog #	Lumens	Watts	LPW	Catalog #	Lumens	Watts	LPW	Catalog #	Lumens	Watts	LPW
RCL 6 LW UV 835	3119	22	141.8	RCL 6 LW UV 840	3216	22	146.2	RCL 6 LW UV 850	3312	22	150.5
RCL 6 MD UV 835	6482	54	120.0	RCL 6 MD UV 840	6682	54	123.7	RCL 6 MD UV 850	6883	54	127.5
RCL 6 HI UV 835	9854	70	140.8	RCL 6 HI UV 840	10159	70	145.1	RCL 6 HI UV 850	10463	70	149.5
RCL 6 VH UV 835	12423	95	130.8	RCL 6 VH UV 840	12807	95	134.8	RCL 6 VH UV 850	13192	95	138.9
RCL 6 LW UV FR 835	2994	22	136.1	RCL 6 LW UV FR 840	3086	22	140.3	RCL 6 LW UV FR 850	3179	22	144.5
RCL 6 MD UV FR 835	6221	54	115.2	RCL 6 MD UV FR 840	6413	54	118.8	RCL 6 MD UV FR 850	6606	54	122.3
RCL 6 HI UV FR 835	9457	70	135.1	RCL 6 HI UV FR 840	9750	70	139.3	RCL 6 HI UV FR 850	10042	70	143.5
RCL 6 VH UV FR 835	11923	95	125.5	RCL 6 VH UV FR 840	12292	95	129.4	RCL 6 VH UV FR 850	12660	95	133.3

Photometric Data:

Relative Luminous Intensity  
RCL - no lens



Relative Luminous Intensity  
RCL - with Frosted Diffuser



The RCL features field replaceable boards and drivers. This allows you to upgrade to more efficient technology in the future. Or, in the rare event of a failure, you can rapidly replace defective components. Re-boardABILITY helps to ensure you won't get stuck with an obsolete light fixture. [Learn more about Re-boardABILITY here.](#)

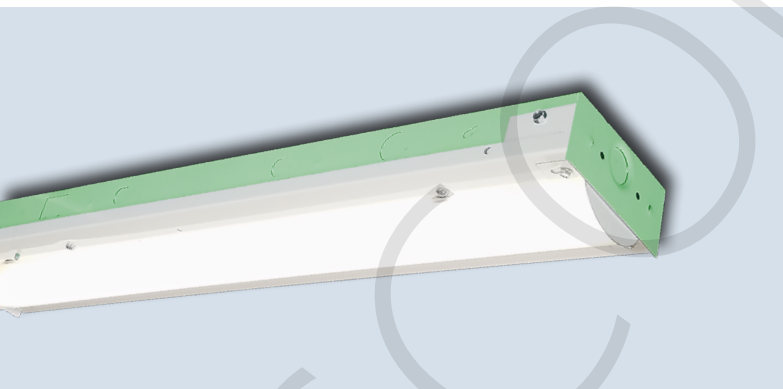


## ZOSMD option: **Leviton 0-10V High Frequency Microwave Sensor**

The RCL can be equipped with an integrated Leviton 0-10V dimming high frequency microwave sensor ("ZOSMD" option). The ZOSMD detects motion through low density materials allowing it to be installed out of site, under the RCL's frosted lens. The high frequency waves offer less interference and false tripping than traditional sensing technology for reliable occupancy applications. The integrated daylighting sensor detects natural light and turns lights ON or keeps lights OFF in response to available natural light or the daylight set point when motion is detected.

Features:

- Automatic switching or dimming based on motion
- Ambient light override
- Designed to detect movement behind low-density fixture materials or behind objects made of plastic or glass
- up to 49' mounting height
- Detection Zone: 52' diameter x 49' Height Max
- Standby Dimming Level: 10% / 20% / 30% / 50%
- IP20 rated
- 120-277V



## Douglas Lighting Controls, Inc.: Cloud-based controls

The RCL can be equipped with the Douglas Bluetooth Intelligent Fixture Sensor (IFS) as well as the Intelligent Fixture Controller.

### IFS



- Occupancy, vacancy, partial-on and partial-off
- Occupancy timeout adjustable from 5 to 90 minutes
- Primary and secondary daylight harvesting
- Up to 16.4' (5m) mounting height

### IFC



- Listed for emergency control when used on dedicated emergency power bus
- Same occupancy and daylight controls as the IFS when networked with one or more IFS sensors

### Available with both IFS and IFC:

- 0-10V dimming with dim-to-off
- Bluetooth beacon for digital ceiling, IoT and location service strategies
  - 150-foot clear line of sight, 50 feet through standard walls
- May be used with dual-channel, tunable white LED drivers providing auxiliary power and dim-to-off capability
- Commissioning through Douglas Lighting Controls, Inc. app from Apple app store
  - **Note:** Additional equipment required for IoT capabilities

## CheckLight® Energy Management System

Douglas controls can be integrated with the CheckLight® Energy Management system. This system can help you uncover energy conversion opportunities, create conservation strategies, analyze lighting load inefficiencies, and make configuration changes from anywhere with Douglas' user-friendly interface. You can get measurements, reports, and control your system from a web-based application.

CheckLight® has the capability to look at different facilities within a portfolio and use data benchmarks to compare building performances.

- Find energy conservation opportunities
- Create energy saving strategies
- Analyze load inefficiencies
- Optimize energy management

## Enlighted: All-in-one sensors, upgradeable systems

Enlighted's SMART Micro Sensor is an all-in-one unit: task tuning, high-end trimming, daylight harvesting, and occupancy/vacancy detection. Max installation height is 15 feet.



Enlighted sensors come standard with the Enlighted One system (the "ZENLO" option). Enlighted Connected ("ZENLC") offers even more options. The Enlighted IoT ("ZENLI") option allows the full implementation of Enlighted's services. Each system can be fully upgraded to the next tier in the future. So if you start with Enlighted One but want to add energy reporting or building management systems integration in the future, you can.

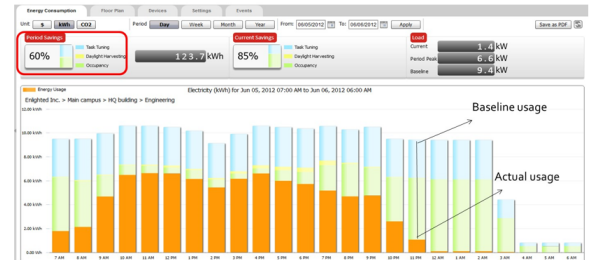
Enlighted Capabilities*	Enlighted One (ZENLO)	Enlighted Connected (ZENLC)	Enlighted IoT (ZENLI)
Motion and Switch Groups	✓	✓	✓
Daylight Harvesting	✓	✓	✓
Schedule Lighting		✓	✓
Energy Reporting & Optimization		✓	✓
Environment Data & Lighting Controls API		✓	✓
Building Management System Integration		✓	✓
Where & Space Applications			✓
Location & Occupancy APIs & Beacons			✓
Future App & API Ready			✓

**Note:** Additional equipment required ZENLC and ZENLI

## Real-time data analytics

Enlighted's control units compile data in real-time, which can be viewed via the Energy Manager. The Energy Manager is part of the Enlighted Connected and Enlighted IoT configurations.

- Real-time measurements and verification of energy savings
- Space analytics - data can be compiled into motion trails and heat maps
- Analyze traffic density and congestion in a space



Learn more about our available advanced controls options here:

[www.lumenfocus.com/controls-overview](http://www.lumenfocus.com/controls-overview)

© 2021 Enlighted for all Enlighted content and images.

© 2021 Douglas Lighting Controls, Inc. for all Douglas content and images. The Bluetooth® word, mark and logos are registered trademarks owned by the Bluetooth SIG, Inc. and any use of such marks by Douglas Lighting Controls is under license. Other trademarks and trade names are those of their respective owners.

