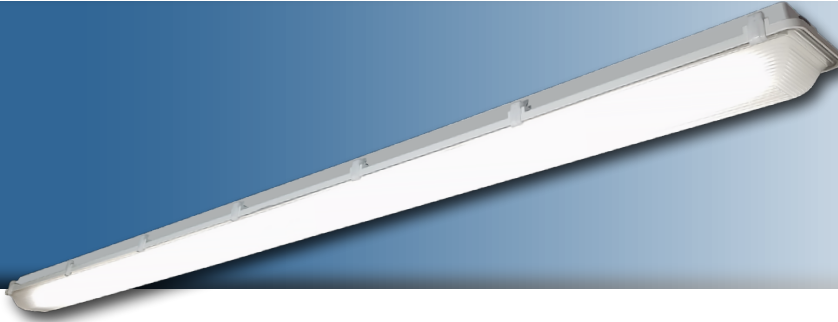


Note: This product has been discontinued and replaced with the NVL G2.



Project: _____
 Location: _____
 Cat. #: _____
 Type: _____
 Quantity: _____

LED

NVL 8 | LED Vaportight

Features:

- High performance LED technology
- 0-10V dimming drivers standard
- Field replaceable LED boards and drivers
- Multiple hanging options, including surface, chain, and aircraft cable, for easy installation
- Durable materials and craftsmanship allows the NVL to withstand some of the harshest environments

Applications:

- Most industrial, retail, and recreational low bay and high bay applications
- Warehouse
 - Manufacturing Facility
 - Food Processing
 - Freezer
 - Gymnasium
 - Car Wash

Ambient Operating Temp.:

- -30°C to 30°C for SH output
- -30°C to 35°C for VH output
- -30°C to 40°C for all other outputs

Predicted L70 Lifetime:

- >72,000 hrs (reported)
- ≥74% lumen maint. @ 72,000 hrs (based on LM-80, TM-21 and in-situ laboratory testing)

Construction:

- UL 5VA fiberglass housing (will not melt or burn)
- Impact resistant acrylic and UV stabilized polycarbonate lenses
- Pre-painted cold rolled steel board trays
- Acetal copolymer secure locking plastic latches (stainless steel latches optional)
- Stainless steel mounting hardware



Certifications:

- UL 1598, suitable for wet locations
- IP65
- IP66
- IP67
- NEMA 4X
- NSF
- PSI 1500
- RoHS



Warranty:

- 5 year limited system warranty - see www.LumenFocus.com for complete warranty terms and conditions



Ordering Guide:

example: NVL 8 HI UV FDA 840 SM

Series	Length	Output	Voltage	Shielding	CRI/CCT	Hanging	Controls	Options
NVL	8							
NVL	8 8'	SL Super Low	UV 120-277	CSP Clear Shallow Polycarbonate	835 80 CRI/3500K	Blank Surface Mounting Bracket (Comes Standard)	Blank No Controls	Blank No Options
		VL Very Low	34 347V	FSP Frosted Shallow Polycarbonate	840 80 CRI/4000K	SMBB Mounting Bracket Bail (For Chain Or Cable Mounting)	ZOS Occupancy Sensor (On/Off)	C6 6' Single Circuit Cord
		LW Low		CRA Clear Ribbed Acrylic	850 80 CRI/5000K	SMBBQC Bracket Bail with 10' Quick Hang Cable Kit	Z221BL Wattstopper Programmable Photo/Motion Multi-Voltage Sensor (high/low/off) ⁽¹⁾	C6(LVL) C6 With Integrated Dimming Leads
		MD Medium		FRA Frosted Ribbed Acrylic		SMBBQC20 Bracket Bail with 20' Quick Hang Cable Kit	Z321BL Wattstopper Bluetooth-enabled Programmable Photo/Motion Multi-Voltage Sensor (high/low/off) ⁽¹⁾	C10 10' Single Circuit Cord
		HI High		CSA Clear Shallow Acrylic		SM45 45° mounting bracket	ZOSMD 0-10V Dimming Microwave Occupancy Sensor	C10(LVL) C10 With Integrated Dimming Leads
		VH Very High		FSA Frosted Shallow Acrylic			ZPC Photocell	D6 6' Dual Circuit Cord
		SH Super High		CDA Clear Deep Acrylic			ZIFC Douglas IFC Controller With Network Capabilities ⁽²⁾	D10 10' Dual Circuit Cord
				FDA Frosted Deep Acrylic			ZFMS Douglas FMS Sensor with Dimming/Occupancy/Daylight Harvesting with Newtork Capabilities ⁽³⁾	P(NEMA) Plug (Specify NEMA configuration)

Notes

- ⁽¹⁾ " " = lens type. See Page 4 for lens descriptions.
- ⁽²⁾ IFC controller - see Page 4 for more details.
- ⁽³⁾ Max ceiling height for Douglas FMS sensor: 40 feet. See Page 5 for more details on advanced controls.
- ⁽⁴⁾ Max ceiling height for Enlighted Ruggedized sensor 50 feet. See Page 5 for more details on advanced controls.
- ⁽⁵⁾ EM1 - 120-277V / 10°C-50°C ambient.
- ⁽⁶⁾ EM1C - 120-277V / -20°C-50°C ambient. Adds 30W to system wattage.
- ⁽⁷⁾ EM2 - 120-277V / 0°C-50°C ambient.

Controls Accessories (order separately)

For Douglas Controls
 BT-DMSW-U-A Bluetooth 1 Zone Dimmer
 BT-4BTSW-U-A Bluetooth 4-Button Wall Station
 BT-8BTSW-U-A Bluetooth 8-Button Wall Station

For Enlighted Controls
 WS-2-00 Enlighted Remote Control Wall Switch (for Enlighted Connected & IoT)
 WS-2-00-IL Enlighted Remote Control Wall Switch (for Enlighted One)

ZOSMD 0-10V Dimming Microwave Occupancy Sensor	D6 6' Dual Circuit Cord
ZPC Photocell	D10 10' Dual Circuit Cord
ZIFC Douglas IFC Controller With Network Capabilities ⁽²⁾	P(NEMA) Plug (Specify NEMA configuration)
ZFMS Douglas FMS Sensor with Dimming/Occupancy/Daylight Harvesting with Newtork Capabilities ⁽³⁾	EM1 Emergency Pack - Up To 8W ⁽⁵⁾
ZENLO Enlighted Ruggedized Sensor with Dimming/Occupancy/Daylight Harvesting and Enlighted One System ⁽⁴⁾	EM1C Emergency Pack - Up To 14W ⁽⁶⁾
ZENLC Enlighted Ruggedized Sensor with Dimming/Occupancy/Daylight Harvesting and Enlighted Connected System ⁽⁴⁾	EM2 Emergency Pack - Up To 16W ⁽⁷⁾
ZENLI Enlighted Ruggedized Sensor with Dimming/Occupancy/Daylight Harvesting and Enlighted IoT System ⁽⁴⁾	SSL Stainless Steel Latches
	SC Safety Cable
	F Fuse
	SDT(480V) 480V To 277V Step Down Transformer
	LVL 0-10V Dimming Leads for Easy Field Access
	BAA Buy American Act Compliant



Performance Chart:

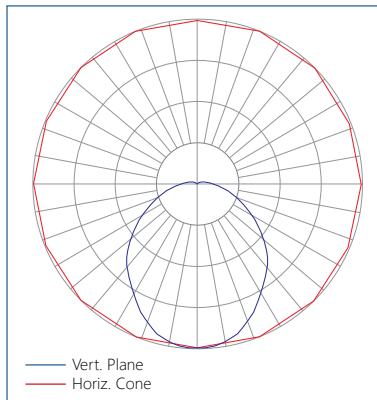
Catalog #	Lumens	Watts	LPW	Catalog #	Lumens	Watts	LPW	Catalog #	Lumens	Watts	LPW
NVL 8 SL UV FRA 835	4152	30	137.6	NVL 8 SL UV FRA 840	4289	30	143	NVL 8 SL UV FRA 850	4417	30	147.2
NVL 8 VL UV FRA 835	5987	46	130.2	NVL 8 VL UV FRA 840	6185	46	134.5	NVL 8 VL UV FRA 850	6371	46	138.5
NVL 8 LW UV FRA 835	8890	66	134.7	NVL 8 LW UV FRA 840	9184	66	139.1	NVL 8 LW UV FRA 850	9459	66	143.3
NVL 8 MD UV FRA 835	11176	82	136.3	NVL 8 MD UV FRA 840	11545	82	140.8	NVL 8 MD UV FRA 850	11892	82	145.0
NVL 8 HI UV FRA 835	13129	100	131.3	NVL 8 HI UV FRA 840	13563	100	135.6	NVL 8 HI UV FRA 850	13970	100	139.7
NVL 8 VH UV FRA 835	17059	134	127.3	NVL 8 VH UV FRA 840	17623	134	131.5	NVL 8 VH UV FRA 850	18152	134	135.5
NVL 8 SH UV FRA 835	20901	174	120.1	NVL 8 SH UV FRA 840	21592	174	124.1	NVL 8 SH UV FRA 850	22239	174	127.8

Lumen Adjustment Factors:

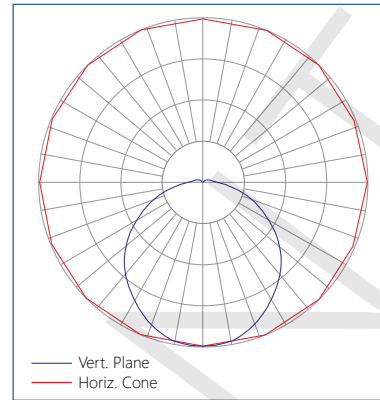
FDA: 1.045 FSA: 1.039 CDA: 1.053 CRA: 1.051 CSA: 1.058

Photometric Data:

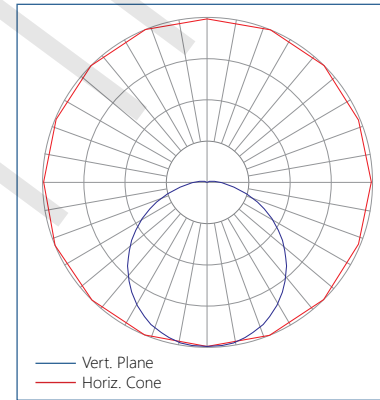
Relative Luminous Intensity with FRA lens



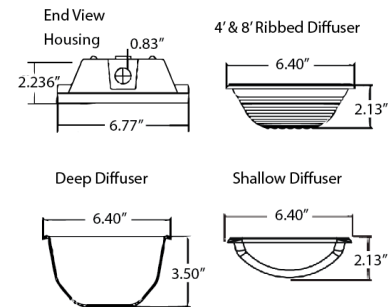
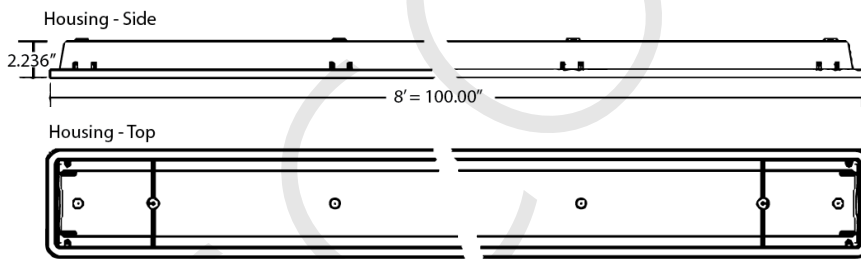
Relative Luminous Intensity with FDA lens



Relative Luminous Intensity with FSA lens



Schematic:



The NVL features field replaceable boards and drivers. This allows you to upgrade to more efficient technology in the future. Or, in the rare event of a failure, you can rapidly replace defective components. Re-boardABILITY helps to ensure you won't get stuck with an obsolete light fixture. [Learn more about Re-boardABILITY here.](#)

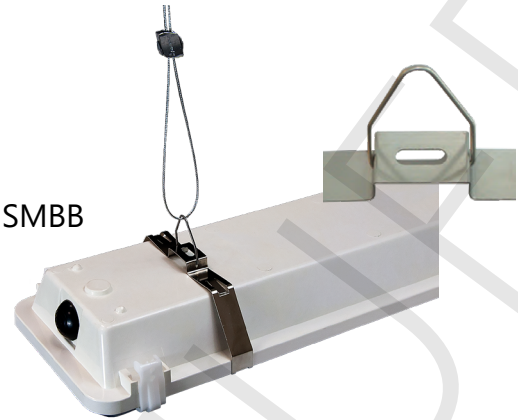


Mounting:

SM



SMBB



Dimming Sensors (Z221B/Z321B)

- The Wattstopper FSP sensor provides multi-level control based on motion and/or daylight contribution
- Rated for cold locations
- Parameters for Bluetooth-enabled Z321B adjustable via phone app - iOS or Android
- Parameters for Z221B adjustable via wireless configuration tool (FSIR-100 - sold separately)
- Three lenses available, tailored for the ideal detection area and mounting height:
 - L2: 360° lens, maximum coverage 48', diameter from 8' height
 - L3: 360° lens, maximum coverage 40', diameter from 20' height
 - L7: 360° lens, maximum coverage 100', diameter from 40' height



1) The Wattstopper FSP sensor. 2) The phone app interface for the Z321B. 3) The FSIR-100 wireless configuration tool.

Douglas Lighting Controls, Inc.: Intelligent Fixture Controller (IFC)

The NVL can be equipped with the Douglas Bluetooth Intelligent Fixture Controller (IFC).

- 0-10V dimming with dim-to-off
- Bluetooth beacon for digital ceiling, IoT and location service strategies
- 150-foot clear line of sight, 50 feet through standard walls
- May be used with dual-channel, tunable white LED drivers providing auxiliary power and dim-to-off capability
- Commissioning through Douglas Lighting Controls, Inc. app from Apple app store
- Listed for emergency control when used on dedicated emergency power bus



Controls Accessories (order separately)

For Douglas Controls

- BT-DMSW-U-A Bluetooth 1 Zone Dimmer
- BT-4BTSW-U-A Bluetooth 4-Button Wall Station
- BT-8BTSW-U-A Bluetooth 8-Button Wall Station



For Enlighted Controls

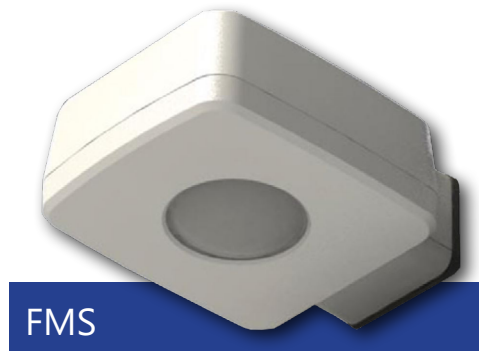
- WS-2-00 Enlighted Remote Control Wall Switch
- WS-2-00-IL Enlighted Remote Control Wall Switch (for Enlighted One)



Douglas Lighting Controls, Inc.: High bay sensors

The NVL can be equipped with the Douglas FMS sensor, which is designed for high bay applications.

With a max sensor height up to 40 feet, the FMS is ideal for applications like warehouses and manufacturing facilities. It can be installed for on/off control or bi-level light functionality. The daylight sensor provides additional savings by dimming the lights to work with the amount of natural available daylight.



- Configuration from the floor via smartphone app
- Bluetooth mesh network is created between devices for control over a group of Douglas sensors
- Occupancy and daylight sensing
- IP65-rated
- 0-10V dimming
- 150 feet clear line of site, 50 feet through standard walls (distances may vary based on location and environment)

CheckLight® Energy Management System

Douglas controls can be integrated with the CheckLight® Energy Management system. This system can help you uncover energy conversion opportunities, create conservation strategies, analyze lighting load inefficiencies, and make configuration changes from anywhere with Douglas' user-friendly interface. You can get measurements, reports, and control your system from a web-based application.

CheckLight® has the capability to look at different facilities within a portfolio and use data benchmarks to compare building performances.

- Find energy conservation opportunities
- Create energy saving strategies
- Analyze load inefficiencies
- Optimize energy management

Enlighted: All-in-one sensors, upgradeable systems

Enlighted's IP65-rated Ruggedized Sensor is an all-in-one unit: task tuning, high-end trimming, daylight harvesting, and occupancy/vacancy detection. Max installation height is 50 feet.

Enlighted sensors come standard with the Enlighted One system (the "ZENLO" option). Enlighted Connected ("ZENLC") offers even more options. The Enlighted IoT ("ZENLI") option allows the full implementation of Enlighted's services. Each system can be fully upgraded to the next tier in the future. So if you start with Enlighted One but want to add energy reporting or building management systems integration in the future, you can.

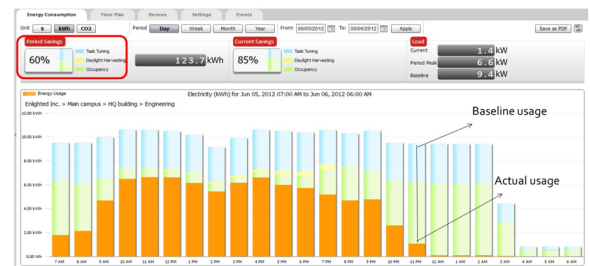
Enlighted Capabilities*	Enlighted One (ZENLO)	Enlighted Connected (ZENLC)	Enlighted IoT (ZENLI)
Motion and Switch Groups	✓	✓	✓
Daylight Harvesting	✓	✓	✓
Schedule Lighting		✓	✓
Energy Reporting & Optimization		✓	✓
Environment Data & Lighting Controls API		✓	✓
Building Management System Integration		✓	✓
Where & Space Applications			✓
Location & Occupancy APIs & Beaconing			✓
Future App & API Ready			✓

Note: Additional equipment required for ZENLC and ZENLI

Real-time data analytics

Enlighted's control units compile data in real-time, which can be viewed via the Energy Manager. The Energy Manager is part of the Enlighted Connected and Enlighted IoT configurations.

- Real-time measurements and verification of energy savings
- Space analytics - data can be compiled into motion trails and heat maps
- Analyze traffic density and congestion in a space



Learn more about our available advanced controls options here:
www.lumenfocus.com/controls-overview

© 2021 Enlighted for all Enlighted content and images.

© 2021 Douglas Lighting Controls, Inc. for all Douglas content and images. The Bluetooth® word, mark and logos are registered trademarks owned by the Bluetooth SIG, Inc. and any use of such marks by Douglas Lighting Controls is under license. Other trademarks and trade names are those of their respective owners.

