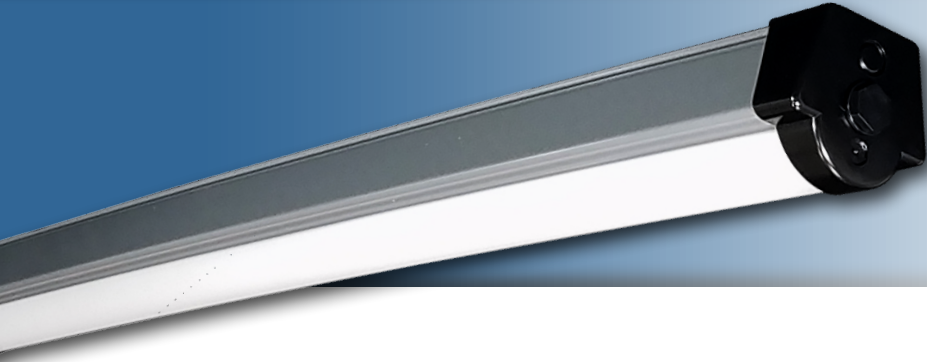


**Note:** This product has been discontinued and replaced with the EVT G2.



Project: \_\_\_\_\_  
 Location: \_\_\_\_\_  
 Cat. #: \_\_\_\_\_  
 Type: \_\_\_\_\_  
 Quantity: \_\_\_\_\_

**LED**

## EVT 8 | LED Extruded Vaportight

### Features:

- High performance LED technology
- 0-10V dimming drivers standard
- Field replaceable LED boards and drivers
- Multiple hanging options, including surface, chain/cable, or pendant for easy installation
- UL approved and evaluated for daisy chaining

### Applications:

- Suitable for most commercial, industrial and institutional applications
- Warehouse
  - Manufacturing Facility
  - Food Processing
  - Stairwells
  - Car Wash

### Predicted L70 Lifetime:

- >100,000 hrs (calculated)
- >72,000 hrs (reported)
- 80% lumen maintenance @ 72,000 hrs (based on LM-80, TM-21 and in-situ laboratory testing)

### Dimensions:

- Length: 8'
- Width: 3.86"
- Depth: 3.75"

### Construction:

- (f1) rated acrylic co-extruded lens and housing - lens and housing is all one piece
- Pre-painted cold rolled steel board trays
- Gasketed end caps
- Stainless steel mounting hardware



### Certifications:

- UL 1598 listed for US and Canada, suitable for wet locations
- IP65
- IP66
- NSF
- RoHS



### Ambient Operating Temp.:

- -30°C to 40°C

### Warranty:

- 5 year limited system warranty - see [www.LumenFocus.com](http://www.LumenFocus.com) for complete warranty terms and conditions



Ordering Guide:

example: EVT 8 MD UV FA 840 ZOSMD SB

Series	Length	Output	Voltage	Shielding	CRI/CCT	Mounting	Controls	Options
EVT	8		UV	FA				
EVT	8 8'	<b>VL</b> Very Low	<b>UV</b> 120-277	<b>FA</b> Frosted Acrylic	<b>835</b> 80 CRI/3500K	<b>Blank</b> Snap-On Mounting Bracket (For Surface Mounting)	<b>Blank</b> No Controls <b>ZOSM</b> Microwave Occupancy Sensor <sup>(1)</sup> <b>ZOSMD</b> 0-10V Dimming Microwave Occupancy Sensor <sup>(1)</sup> <b>ZIFC</b> Douglas IFC Controller With Network Capabilities <sup>(1)</sup>	<b>Blank</b> No Options <b>C6</b> 6' Single Circuit Cord <b>C6(LVL)</b> C6 With Integrated Dimming Leads <b>C10</b> 10' Single Circuit Cord <b>C10(LVL)</b> C10 With Integrated Dimming Leads <b>D6</b> 6' Dual Circuit Cord <b>D10</b> 10' Dual Circuit Cord <b>SB</b> Safety Bail <b>LVL</b> 0-10V Dimming Leads for Easy Field Access <b>BAA</b> Buy American Act Compliant
		<b>LW</b> Low			<b>840</b> 80 CRI/4000K	<b>SMBB</b> Snap-On Mount with Bracket Bail (For Chain or Cable Mounting)		
		<b>MD</b> Medium			<b>850</b> 80 CRI/5000K	<b>SMBBQC</b> Snap-On Mount with Bracket Bail and 10' Quick Hang Cable Kit <b>SMBBQC20</b> Snap-On Mount with Bracket Bail and 20' Quick Hang Cable Kit <b>SMD</b> Snap-On Mount Drilled (For Threaded Rod Pendant, Not Included)		

Notes

<sup>(1)</sup> See Page 3 for more details.

Controls Accessories (order separately)

**For Douglas Controls**  
 BT-DMSW-U-A Bluetooth 1 Zone Dimmer  
 BT-4BTSW-U-A Bluetooth 4-Button Wall Station  
 BT-8BTSW-U-A Bluetooth 8-Button Wall Station

Mounting:

Snap On Bracket (Standard)

**SMBB**  
Bracket Bail (for chain or cable mounting)

**SMD**  
Drilled (for threaded rod pendant mounting)

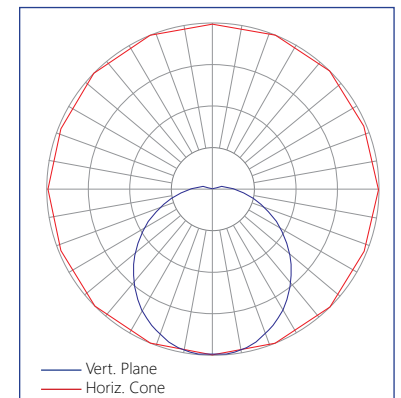
**SB**  
Safety Bail Option

Performance Chart:

Catalog #	Watts	Lumens (835)	LPW (835)	Lumens (840)	LPW (840)	Lumens (850)	LPW (850)
EVT 8 VL UV FA 8xx	36	4499	126.4	4648	130.6	4788	134.5
EVT 8 LW UV FA 8xx	50	6164	122.7	6368	126.7	6559	130.5
EVT 8 MD UV FA 8xx	69	8073	117.2	8339	121.0	8590	124.7

Photometric Data:

Relative Luminous Intensity



The EVT features field replaceable boards and drivers. This allows you to upgrade to more efficient technology in the future. Or, in the rare event of a failure, you can rapidly replace defective components. Re-boardABILITY helps to ensure you won't get stuck with an obsolete light fixture. [Learn more about Re-boardABILITY here.](#)



### ZOSM option: Leviton High Frequency Microwave Sensor

The EVT can be equipped with an integrated Leviton high frequency microwave sensor ("ZOSM" option). The ZOSM detects motion through low density materials allowing it to be installed out of site, under the FFR P's frosted lens. The high frequency waves offer less interference and false tripping than traditional sensing technology for reliable occupancy applications. The integrated daylighting sensor detects natural light and turns lights ON or keeps lights OFF in response to available natural light or the daylight set point when motion is detected.

- Features:
- Automatic switching based on motion and ambient light level
  - Designed to detect movement behind low-density fixture materials or behind objects made of plastic or glass
  - up to 32' mounting height
  - Detection Zone: 52' diameter x 32' Height Max
  - IP20 rated
  - 120-277V



### ZOSMD option: Leviton 0-10V High Frequency Microwave Sensor

The EVT can be equipped with an integrated Leviton 0-10V dimming high frequency microwave sensor ("ZOSMD" option). The ZOSMD detects motion through low density materials allowing it to be installed out of site, under the FFR P's frosted lens. The high frequency waves offer less interference and false tripping than traditional sensing technology for reliable occupancy applications. The integrated daylighting sensor detects natural light and turns lights ON or keeps lights OFF in response to available natural light or the daylight set point when motion is detected.

- Features:
- Automatic switching or dimming based on motion
  - Ambient light override
  - Designed to detect movement behind low-density fixture materials or behind objects made of plastic or glass
  - up to 49' mounting height
  - Detection Zone: 52' diameter x 49' Height Max
  - Standby Dimming Level: 10% / 20% / 30% / 50%
  - IP20 rated
  - 120-277V



### Douglas Lighting Controls, Inc.: Intelligent Fixture Controller (IFC)

The EVT can be equipped with the Douglas Bluetooth Intelligent Fixture Controller (IFC).

- 0-10V dimming with dim-to-off
- Bluetooth beacon for digital ceiling, IoT and location service strategies
- 150-foot clear line of sight, 50 feet through standard walls
- May be used with dual-channel, tunable white LED drivers providing auxiliary power and dim-to-off capability
- Commissioning through Douglas Lighting Controls, Inc. app from Apple app store
- Listed for emergency control when used on dedicated emergency power bus

### CheckLight® Energy Management System

Douglas controls can be integrated with the CheckLight® Energy Management system. This system can help you uncover energy conversion opportunities, create conservation strategies, analyze lighting load inefficiencies, and make configuration changes from anywhere with Douglas' user-friendly interface. You can get measurements, reports, and control your system from a web-based application.

- CheckLight® has the capability to look at different facilities within a portfolio and use data benchmarks to compare building performances.
- Find energy conservation opportunities
  - Create energy saving strategies
  - Analyze load inefficiencies
  - Optimize energy management

Learn more about our available advanced controls options here: [www.lumenfocus.com/controls-overview](http://www.lumenfocus.com/controls-overview)

© 2021 Douglas Lighting Controls, Inc. for all Douglas content and images. The Bluetooth® word, mark and logos are registered trademarks owned by the Bluetooth SIG, Inc. and any use of such marks by Douglas Lighting Controls is under license. Other trademarks and trade names are those of their respective owners.

