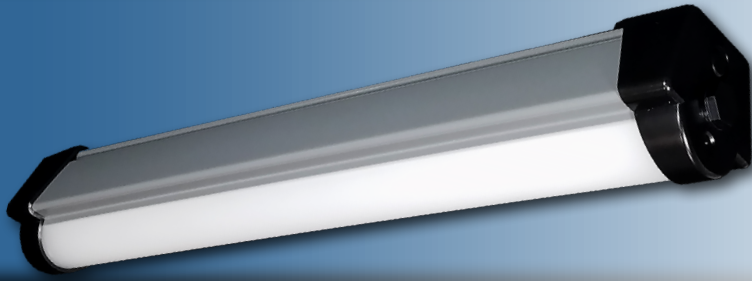


**Note:** This product has been discontinued and replaced with the EVT G2.



Project: \_\_\_\_\_  
 Location: \_\_\_\_\_  
 Cat. #: \_\_\_\_\_  
 Type: \_\_\_\_\_  
 Quantity: \_\_\_\_\_

LED

## EVT 2 | LED Extruded Vaportight

### Features:

- High performance LED technology
- 0-10V dimming drivers standard
- Field replaceable LED boards and drivers
- Multiple hanging options, including surface, chain/cable, or pendant for easy installation
- UL approved and evaluated for daisy chaining

### Applications:

- Suitable for most commercial, industrial and institutional applications
- Warehouse
  - Manufacturing Facility
  - Food Processing
  - Stairwells
  - Car Wash

### Predicted L70 Lifetime:

- >100,000 hrs (calculated)
- >72,000 hrs (reported)
- 80% lumen maintenance @ 72,000 hrs (based on LM-80, TM-21 and in-situ laboratory testing)

### Dimensions:

- Length: 2'
- Width: 3.86"
- Depth: 3.75"



### Construction:

- (f1) rated acrylic co-extruded lens and housing - lens and housing is all one piece
- Pre-painted cold rolled steel board trays
- Gasketed end caps
- Stainless steel mounting hardware



### Certifications:

- UL 1598 listed for US and Canada, suitable for wet locations
- IP65
- IP66
- NSF
- RoHS



### Ambient Operating Temp.:

- -30°C to 40°C

### Warranty:

- 5 year limited system warranty - see [www.LumenFocus.com](http://www.LumenFocus.com) for complete warranty terms and conditions



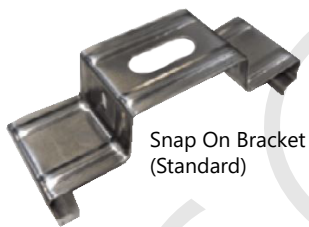
**Ordering Guide:**

example: EVT 2 MD UV FA 840 SB

Series	Length	Output	Voltage	Shielding	CRI/CCT	Mounting	Options	
EVT	2		UV	FA				
EVT	2 2'	<b>VL</b> Very Low	<b>UV</b> 120-277	<b>FA</b> Frosted Acrylic	<b>835</b> 80 CRI/3500K	<b>Blank</b> Snap-On Mounting Bracket (For Surface Mounting)	<b>Blank</b> No Options	
		<b>LW</b> Low			<b>840</b> 80 CRI/4000K			<b>C6</b> 6' Single Circuit Cord
		<b>MD</b> Medium			<b>850</b> 80 CRI/5000K			<b>C6(LVL)</b> C6 With Integrated Dimming Leads
						<b>SMBBQC</b> Snap-On Mount with Bracket Bail (For Chain or Cable Mounting)	<b>C10</b> 10' Single Circuit Cord	
						<b>SMBBQC20</b> Snap-On Mount with Bracket Bail and 20' Quick Hang Cable Kit	<b>C10(LVL)</b> C10 With Integrated Dimming Leads	
						<b>SMD</b> Snap-On Mount Drilled (For Threaded Rod Pendant, Not Included)	<b>D6</b> 6' Dual Circuit Cord	
							<b>D10</b> 10' Dual Circuit Cord	
							<b>SB</b> Safety Bail	
							<b>LVL</b> 0-10V Dimming Leads for Easy Field Access	
							<b>BAA</b> Buy American Act Compliant	



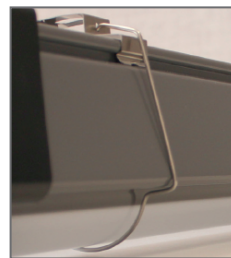
**Mounting:**



**SMBB**  
Bracket Bail (for chain or cable mounting)



**SMD**  
Drilled (for threaded rod pendant mounting)



**SB**  
Safety Bail Option

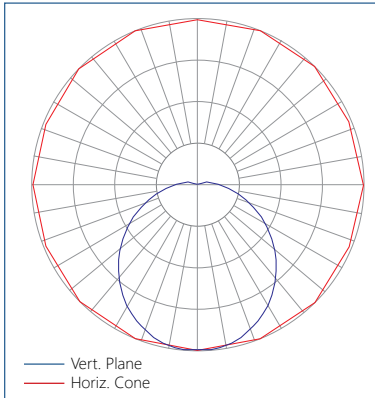


Performance Chart:

Catalog #	Watts	Lumens (835)	LPW (835)	Lumens (840)	LPW (840)	Lumens (850)	LPW (850)
EVT 2 VL UV FA 8xx	18	1930	109.4	1993	113.0	2053	116.4
EVT 2 LW UV FA 8xx	23	2588	111.4	2673	115.1	2754	118.5
EVT 2 MD UV FA 8xx	33	3504	106.4	3620	109.9	3728	113.2

Photometric Data:

Relative Luminous Intensity



LUMENFOCUS  
Re-boardABILITY

The EVT features field replaceable boards and drivers. This allows you to upgrade to more efficient technology in the future. Or, in the rare event of a failure, you can rapidly replace defective components. Re-boardABILITY helps to ensure you won't get stuck with an obsolete light fixture.

[Learn more about Re-boardABILITY here.](#)